

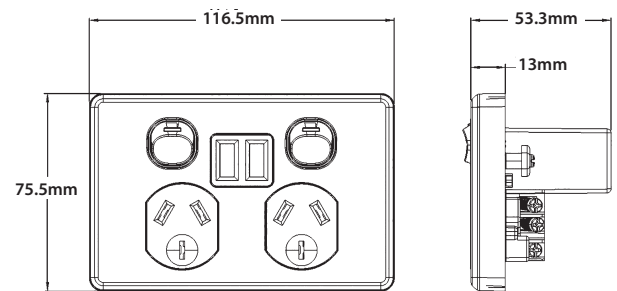
PUMA TM

Range of USBs



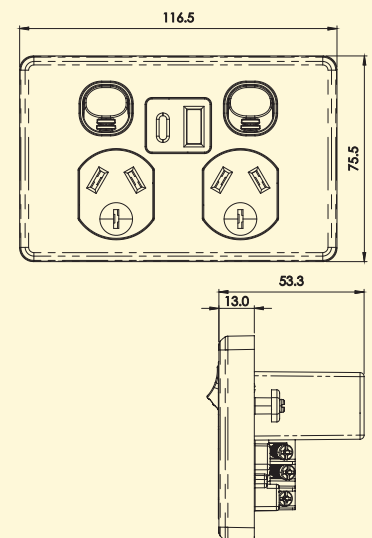
PUPP2USB2G

- USB outlet approved to AS/NZS 60950.1
- Electrical power point approved to AS/NZS 3112
- The rating for the USB is 3.4A at 5V when one device is inserted then it divides to split the output when a device is inserted in each USB socket.
- Fits standard wall boxes and mounting accessories
- Full cover plate
- Covers, plates and dollies are made from UV stabilised polycarbonate to avoid discolouring to yellow
- Standard colour is white. Black and Brushed Aluminium covers also stocked - please check availability



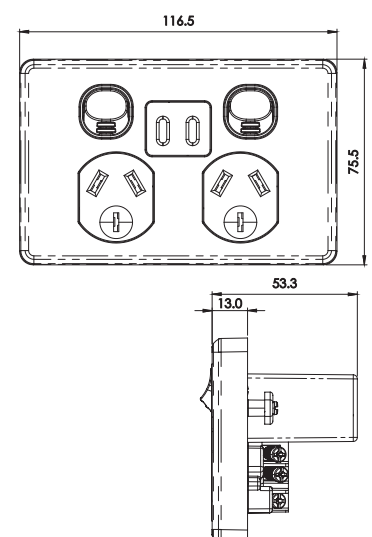
PUPP2USB2GAC

- Suitable for USB Type C applications up to 3 Amp at 5V.
- Ideal for phones that utilise USB Type C connections.
- Not suitable for lap tops or other devices requiring greater output than 3 Amp at 5V.
- USB outlet approved to AS/NZS 60950.1
- Electrical power point approved to AS/NZS 3112
- The overall electronic assembly rating is 3.4A at 5V; it then divides the output when devices are inserted in each USB socket.
- Fits standard wall boxes and mounting accessories
- Full cover plate
- Covers, plates and dollies are made from UV stabilised polycarbonate to avoid discolouring to yellow
- Standard colour is white. Black and Brushed Aluminium covers also stocked - please check availability



PUPP2USB2GCC

- Switch socket rated 10A 205V ac.
- Suitable for USB C applications and performs with the following characteristics:
- USB input 230-240V ~; 50Hz; max 0.5A
- USB-C1 (left output port) C2 (right output port)
- USB-C1 output: DC 5V/3A; DC 9V/3A; DC 12V/2.5A; DC 15V/2A; DC 20V1.5A; PD 30W max.
- USB-C2 output: DC 5V/3A; DC 9V/3A; DC 12V/2.5A; DC 15V/2A; DC 20V1.5A; PD 30W max.
- USB-C1 +C2 output: USB-C1: DC 5V/3A; DC 9V/3A; DC 12V/1.67A; PD 20W max + DC 5V/2A max.
- Socket tested in accordance with AS/NZS 3112.
- USB tested in accordance with IEC61558-2-16 and AS/NZS 61558.1.
- Not suitable for laptops requiring larger power requirement.
- Fits wall boxes and mounting accessories.
- Full cover plate.
- Covers and dollies are made from UV stabilised polycarbonate to avoid discolouring to yellow.
- Standard colours are white and black.
- This model does **NOT** fit the brushed Aluminium cover that are stocked of similar models.

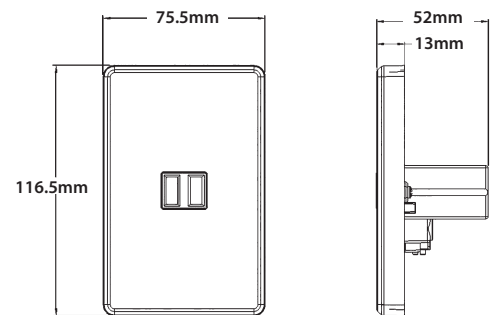


PUMA™ Range of USBs



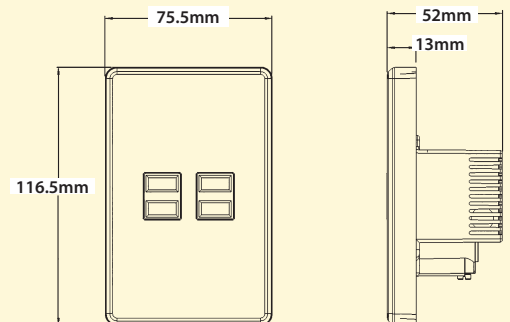
PUUSB2G

- USB outlet approved to AS/NZS 60950.1
- The rating for the USB is 3.4A at 5V when one device is inserted then it divides to split the output when a device is inserted in each USB socket
- USB power supply contains temperature cut out and overload protection
- Fits standard wall boxes and mounting accessories
- Full cover plate
- Covers, plates and dollies are made from UV stabilised polycarbonate to avoid discolouring to yellow
- Standard colour is white.



PUUSB4G

- USB outlet approved to AS/NZS 60950.1
- The rating for the USB is 2 x 3.1A at 5V when one device is inserted then it divides to split the output when a device is inserted in each USB socket - 3.1A available across
- 2 USB outlets on the left and 3.1A available across 2 USB outlets on the right
- USB power supply contains temperature cut out and overload protection
- Fits standard wall boxes and mounting accessories
- Full cover plate
- Covers, plates and dollies are made from UV stabilised polycarbonate to avoid discolouring to yellow
- Standard colour is white.



PUPP2USB2G



PUPP2USB2GBK



PUPP2USB2GAC



PUPP2USB2GACBK



PUPP2USB2GCC



PUPP2USB2GCCBK



PUUSB2G



PUUSB4G