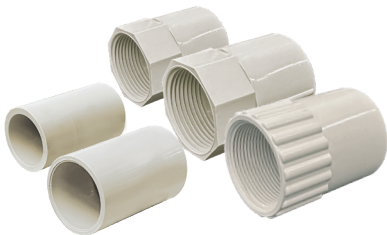


# TRADER COBRA<sup>TM</sup> Conduit Fittings



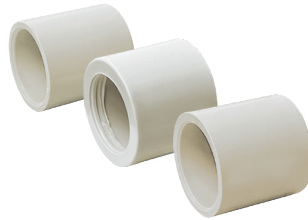
## Features:

- Material: PVC (Polyvinyl chloride)
- Lower / Upper temperature range: -15°C / 60°C
- AS/NZS61386.1:2015;  
IEC 61386-1: 2008 Part 1: General requirements;  
IEC 61386-21: 2002 Part 21: Particular requirements – Rigid conduit systems  
AS/NZS IEC 60670-1:2015 Boxes and enclosures for electrical accessories for household and similar fixed electrical installations -- Part 1: General requirements.



### Couplings

Diameter 20mm, 25mm tube  
Plain & Plain to threaded  
Diameter 20mm, 25mm & 32mm tube



### Plain Reducers

Diameter 16mm, 20mm & 25mm tube



### Threaded Reducer

40mm to 32mm



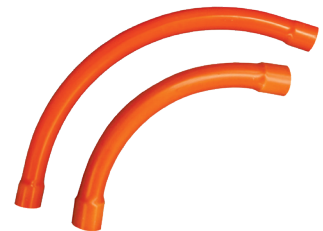
### Adaptors

Diameter 20mm & 25mm tube  
Plain to threaded



### Straight Glands

Diameter 20mm & 25mm tube  
M20, 1.5mm, Lock nut, Straight



### Large Bend

Operating angle 90 degree  
Diameter 25mm & 32 mm tube



### Standard Bend

Operating angle 90 degree  
Diameter 20mm, 25mm & 32 mm tube



### Elbow Connectors

Operating angle 90 degree  
Diameter 20mm & 25mm tube



### Junction Boxes

Diameter 20mm & 25mm tube



### Inspection Tee

Diameter 20mm & 25mm tube