

BESMOKEY10

*See current catalogue for further detail



Page 1 of 2

Cleaning Guide:

Spraying cleaning products on to electrical products is not recommended. It is important to ensure that switches are turned off before cleaning.

Do not use any cleaning sprays - only wipe down with damp cloth or rub with dry cloth. (Do not use an abrasive cloth as it may scratch the plastic).

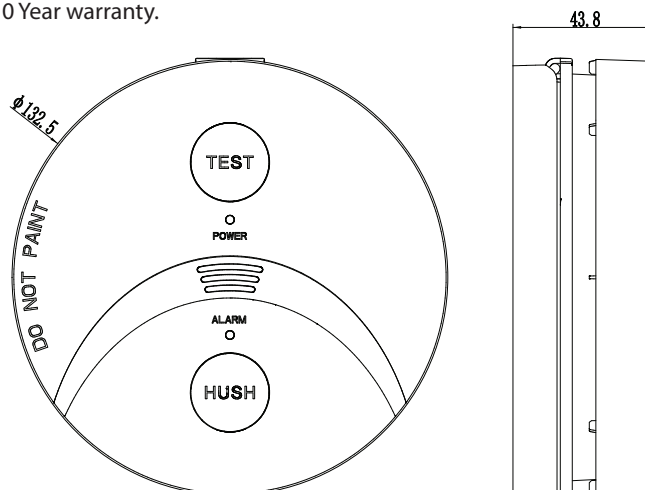
Do not use harsh chemical cleaners as these can break down the plastic and cause it to crack.

BESMOKEY10 Smoke Alarms come with a 10 Year Warranty from date of purchase. BESMOKEY10 Accessories are warranted for 7 Years from date of purchase. Proof of Purchase is required for Warranty Claims

– please see www.gsme.com.au for details regarding warranty claims.

Bear Photoelectric Smoke Alarm Wireless Ready

- Photoelectric Sensing Technology.
- Activfire Listed.
- Complies with AS3786:2014.
- Main power source 220-240 V AC 50 Hz.
- Secondary power source DC 3V battery 10 Year Lithium.
- Interconnection Max. 24 alarms (wired 150m maximum).
- Wireless upgradeable by clipping in BESMOKEY10WM and linking with other alarms that also contain the module.
- 4 hard wired Terminals that accommodate 2 x 2.5mm² (A, E-Loop, N, I-connect) for hard wired applications.
- Surface Mount Base Plate with Large Cable Terminals.
- Suitable for Ceiling or Wall Mounting.
- Alarm volume ≥ 85dB(A) @ 3m complying with ISO8201 alarm pattern.
- Operating Temperature 0 °C to 40 °C.
- Maximum humidity for installation: 5-95% Relative Humidity.
- Red LED Alarm Status Indication.
- Green LED AC Mains Power Indication.
- Separate test and Hush Buttons to assist with wireless linking.
- Insect Screen protects Sensing Chamber.
- Sleek Styling.
- The BESMOKEY10 with BESMOKEY10WM can also pair to BESMOKEY10BW 10 Year Lithium Wireless Smoke Alarm.
- 10 Year warranty.



Catalogue Number	Description
BESMOKEY10	Smoke Alarm Photoelectric Surface Mount 220-240V AC 3V DC Lithium 10 Year Battery Wireless Interconnect Ready 4 Terminals

Certification Number:
Active Fire: afp-3688

GSM Electrical (Australia) Pty Ltd
Level 2, 142-144 Fullarton Road, Rose Park SA 5067
P: 1300 301 838 F: 1300 301 778 E: service@gsme.com.au
www.gsme.com.au



Data Specification Sheet
October 2022

BESMOKEY10

*See current catalogue for further detail



Page 2 of 2

Cleaning Guide:

Spraying cleaning products on to electrical products is not recommended. It is important to ensure that switches are turned off before cleaning.

Do not use any cleaning sprays - only wipe down with damp cloth or rub with dry cloth. (Do not use an abrasive cloth as it may scratch the plastic).

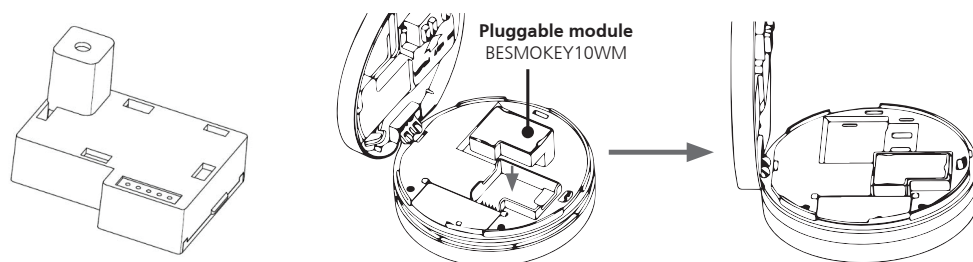
Do not use harsh chemical cleaners as these can break down the plastic and cause it to crack.

BESMOKEY10 Smoke Alarms come with a 10 Year Warranty from date of purchase. BESMOKEY10 Accessories are warranted for 7 Years from date of purchase. Proof of Purchase is required for Warranty Claims

– please see www.gsme.com.au for details regarding warranty claims.

Bear Photoelectric Smoke Alarm Wireless Ready

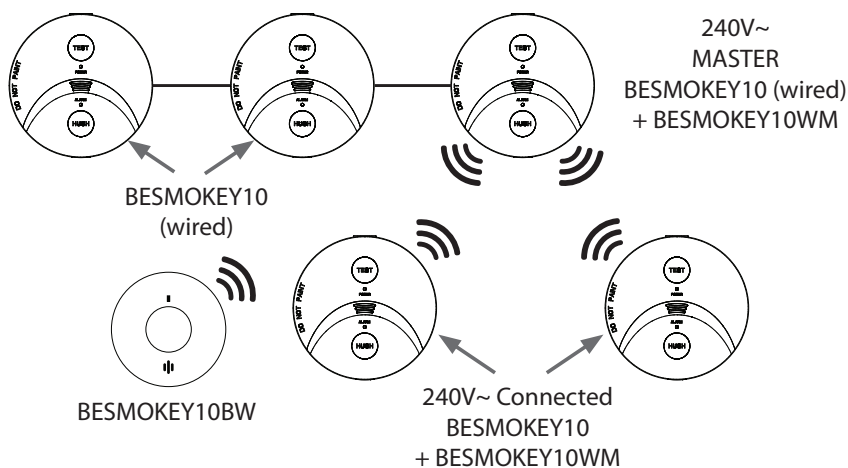
Making BESMOKEY10 Wireless:



To make wireless, before removing battery tag add BESMOKEY10MW, then connect battery and power. Follow instruction to pair the wireless alarms in the network.

Example of a network using BESMOKEY10 combined with hard wired and interconnected (using cable) with a single “master” alarm with the BESMOKEY10MW module fitted communicating with others in the system that are operating from the 10 Year Lithium battery.

NETWORK CONFIGURATION EXAMPLE



BESMOKEYREM can be installed on wireless network for convenient control.

Certification Number:
Active Fire: afp-3688

GSM Electrical (Australia) Pty Ltd
Level 2, 142-144 Fullarton Road, Rose Park SA 5067
P: 1300 301 838 F: 1300 301 778 E: service@gsme.com.au
www.gsme.com.au



Data Specification Sheet
October 2022



BESMOKEY10WM

*See current catalogue for further detail



Cleaning Guide:

Spraying cleaning products on to electrical products is not recommended. It is important to ensure that switches are turned off before cleaning.

Do not use any cleaning sprays - only wipe down with damp cloth or rub with dry cloth. (Do not use an abrasive cloth as it may scratch the plastic).

Do not use harsh chemical cleaners as these can break down the plastic and cause it to crack.

BESMOKEY10 Smoke Alarms come with a 10 Year Warranty from date of purchase. BESMOKEY10 Accessories are warranted for 7 Years from date of purchase. Proof of Purchase is required for Warranty Claims

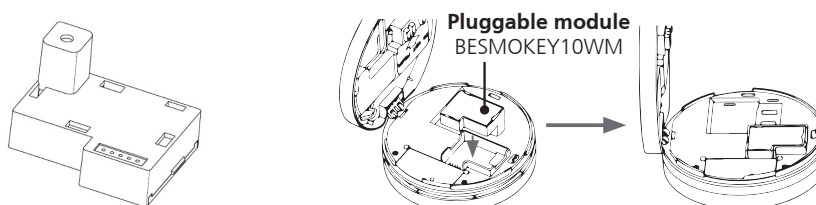
– please see www.gsme.com.au for details regarding warranty claims.

BESMOKEY10WM Wireless Module

- Application: Suitable for TRADER BESMOKEY10 220-240V a.c. smoke alarm .
- Wireless Distance: >60m (clear line of sight).
- Frequency: 433.42MHz.
- Interconnection capacity: Maximum 40 devices .
- Size: 45 x 35 x 26mm.
- Temp range: 0°C - 45°C .
- Max Humidity: 5-95%RH.
- Wireless module complies with AS/NZS4268.
- Alarm Signal Pattern when installed in BESMOKEY10: ISO 8201 and AS 3786:2014 compliant
- Introducing Wireless Alarm Option into the network with the BESMOKEY10WM module.
- This module can be installed into the BESMOKEY10 by first disconnecting the power and opening one of the mains powered alarms, do this before removing the yellow tag for the battery, replace the blank housing with the BESMOKEY10WM wireless module then remove battery tag to connect power.
- The BESMOKEY10WM communicates at 433.42MHz and can operate at range greater than 60m.
- With the power off select one mains wired alarm to be the master for the wireless link and install the BESMOKEY10WM.
- The BESMOKEY10 with BESMOKEY10WM can also pair to BESMOKEY10BW 10 Year Lithium Wireless Smoke Alarm.

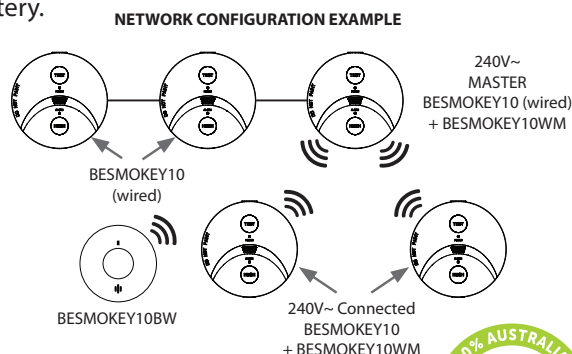
Caution: Only install one pluggable BESMOKEY10WM module into a group of mains-wired interconnected alarms. If there is more than one installed with wired connections, it will not work. Follow the instructions provided to pair the wireless alarms in the network.

Making BESMOKEY10 Wireless:



To make wireless, before removing battery tag add BESMOKEY10WM, then connect battery and power. Follow instruction to pair the wireless alarms in the network.

Example of a network using BESMOKEY10 combined with hard wired and interconnected (using cable) with a single "master" alarm with the BESMOKEY10WM module fitted communicating with others in the system that are operating from the 10 Year Lithium battery.



Certification Number:

Active Fire: afp-3688 with BESMOKEY10

GSM Electrical (Australia) Pty Ltd

Level 2, 142-144 Fullarton Road, Rose Park SA 5067
P: 1300 301 838 F: 1300 301 778 E: service@gsme.com.au
www.gsme.com.au



Data Specification Sheet
October 2022



BESMOKEY10BW

*See current catalogue for further detail



Page 1 of 2

Cleaning Guide:

Spraying cleaning products on to electrical products is not recommended. It is important to ensure that switches are turned off before cleaning.

Do not use any cleaning sprays - only wipe down with damp cloth or rub with dry cloth. (Do not use an abrasive cloth as it may scratch the plastic).

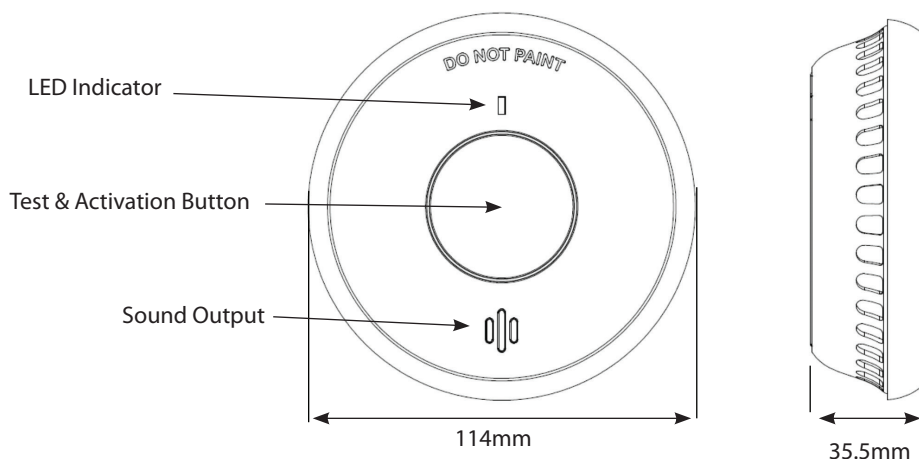
Do not use harsh chemical cleaners as these can break down the plastic and cause it to crack.

BESMOKEY10 Smoke Alarms come with a 10 Year Warranty from date of purchase. BESMOKEY10 Accessories are warranted for 7 Years from date of purchase. Proof of Purchase is required for Warranty Claims

– please see www.gsme.com.au for details regarding warranty claims.

Bear Photoelectric Smoke Alarm Wireless (Non Removable) Lithium Battery Only

- Photoelectric Sensing Technology.
- Activfire Listed.
- Complies with AS3786:2014.
- Main power source: Built-in DC3V Lithium battery (battery not replaceable).
- Interconnection Max. 40 alarms.
- Wireless distance Max. 100 metres in free field.
- Wireless Frequency test 433.42MHZ
- Suitable for Ceiling or Wall Mounting.
- Alarm volume $\geq 85\text{dB(A)}$ @ 3m complying with ISO8201 alarm pattern.
- Operating Temperature $0^{\circ}\text{C} - 40^{\circ}\text{C}$.
- Maximum humidity for installation: $< 93\%$ Relative Humidity.
- Central test & Activation Button.
- Red LED Alarm Status Indication.
- Insect Screen protects Sensing Chamber.
- Sleek Styling.
- The BESMOKEY10BW can also pair to BESMOKEY10 with BESMOKEY10WM installed.
- 10 Year warranty.



Catalogue Number	Description
BESMOKEY10BW	Smoke Alarm Wireless Interconnect Photoelectric Surface Mount Non Removable 3V DC Lithium 10 Year Battery Only

Certification Number:
Active Fire: afp-3735

GSM Electrical (Australia) Pty Ltd
Level 2, 142-144 Fullarton Road, Rose Park SA 5067
P: 1300 301 838 F: 1300 301 778 E: service@gsme.com.au
www.gsme.com.au



Data Specification Sheet
November 2024

BESMOKEY10BW

*See current catalogue for further detail



Page 2 of 2

Cleaning Guide:

Spraying cleaning products on to electrical products is not recommended. It is important to ensure that switches are turned off before cleaning.

Do not use any cleaning sprays - only wipe down with damp cloth or rub with dry cloth. (Do not use an abrasive cloth as it may scratch the plastic).

Do not use harsh chemical cleaners as these can break down the plastic and cause it to crack.

BESMOKEY10 Smoke Alarms come with a 10 Year Warranty from date of purchase. BESMOKEY10 Accessories are warranted for 7 Years from date of purchase. Proof of Purchase is required for Warranty Claims

– please see www.gsme.com.au for details regarding warranty claims.

Bear Photoelectric Smoke Alarm Wireless (Non Removable) Lithium Battery Only

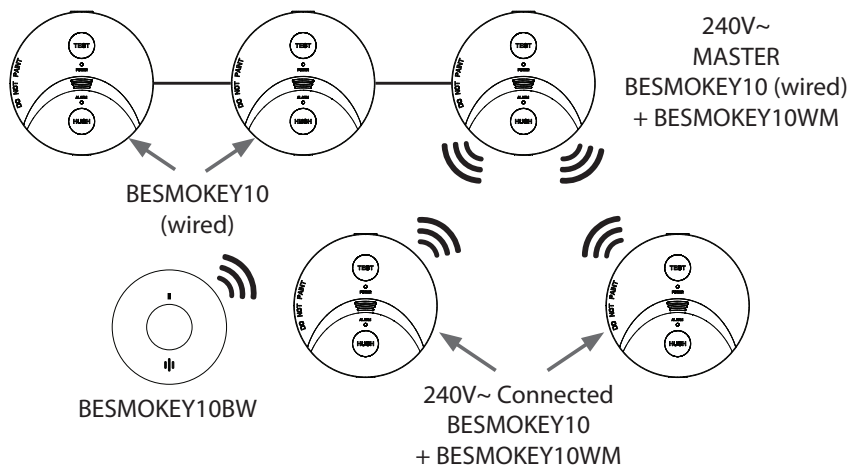


BESMOKEY10BW can be used with BESMOKEY10REM.

BESMOKEY10BW is also net-workable with BESMOKEY10 with BESMOKEY10WM INSTALLED.

Example of a network using BESMOKEY10BW and BESMOKEY10 combined with hard wired and interconnected (using cable) with a single “master” alarm with the BESMOKEY10MW module fitted communicating with others in the system that are operating from the 10 Year Lithium battery.

NETWORK CONFIGURATION EXAMPLE



BESMOKEYREM can be installed on wireless network for convenient control.

Certification Number:
Active Fire: afp-3735

GSM Electrical (Australia) Pty Ltd
Level 2, 142-144 Fullarton Road, Rose Park SA 5067
P: 1300 301 838 F: 1300 301 778 E: service@gsme.com.au
www.gsme.com.au



Data Specification Sheet
October 2022

BESMOKEY10REM

*See current catalogue for further detail



Cleaning Guide:

Spraying cleaning products on to electrical products is not recommended. It is important to ensure that switches are turned off before cleaning.

Do not use any cleaning sprays - only wipe down with damp cloth or rub with dry cloth. (Do not use an abrasive cloth as it may scratch the plastic).

Do not use harsh chemical cleaners as these can break down the plastic and cause it to crack.

BESMOKEY10 Smoke Alarms come with a 10 Year Warranty from date of purchase. BESMOKEY10 Accessories are warranted for 7 Years from date of purchase. Proof of Purchase is required for Warranty Claims

– please see www.gsme.com.au for details regarding warranty claims.

Bear Smoke Alarm Wireless Remote for BESMOKEY10 with Wireless Module (BESMOKEY10WM) installed and BESMOKEY10BW

- Works with the BESMOKEY10 with Wireless Module (BESMOKEY10WM) installed and also BESMOKEY10BW.
- Complies with AS/NZS 4268.
- Power source DC 3V (CR2450) Lithium Button Battery.
- Wireless distance > 5 meters depending on surroundings.
- 433.42MHz Wireless frequency.
- Size 53.1mm x 61.9 mm x 16.3mm.
- Interconnection Max. 40 devices.
- Humidity Range ≤95% relative humidity (RH).
- Standby current ≤3uA Operation.
- Current ≤30mA.
- Operating temperature 0~45°C.
- “Test” button sends the test alarm signal to the smoke alarm.
- “Locate” button detected the smoke alarm is sounding and operating in the alarm status.
- “Hush” button locates the alarm that has initiated the alarm mode situation and hush the smoke alarm for 10 minutes.
- “SOS” button to activate the alarm network and use them to alert people to a non-fire-related emergency.
- 10 year Battery Lifetime.

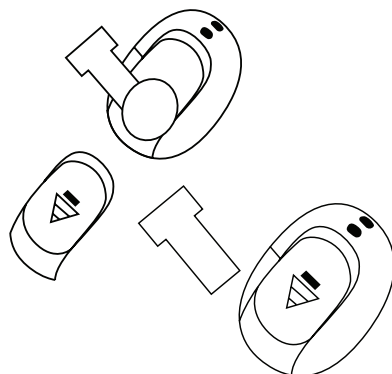
Warning:

The BESMOKEY10REM is not a toy and should be used carefully. Do not immerse in water or liquids.

The product contains a Lithium button battery that is hazardous and should be kept away from children. The batter may cause fatal injury if swallowed and immediate medical attention should be sought.

If the BESMOKEY10REM is not functioning, please ensure the plastic tab has been removed from the battery compartment. If there is a need to change the battery for any reason, do not handle the battery surfaces with fingers as this may affect the performance as shown below.

Changing the Battery:



GSM Electrical (Australia) Pty Ltd

Level 2, 142-144 Fullarton Road, Rose Park SA 5067
P: 1300 301 838 F: 1300 301 778 E: service@gsme.com.au
www.gsme.com.au



Battery Warranty



Data Specification Sheet
October 2022

BESMOKEYV2 BESMOKEYV2BK



Page 1 of 2

Cleaning Guide:

Spraying cleaning products on to electrical products is not recommended. It is important to ensure that switches are turned off before cleaning.

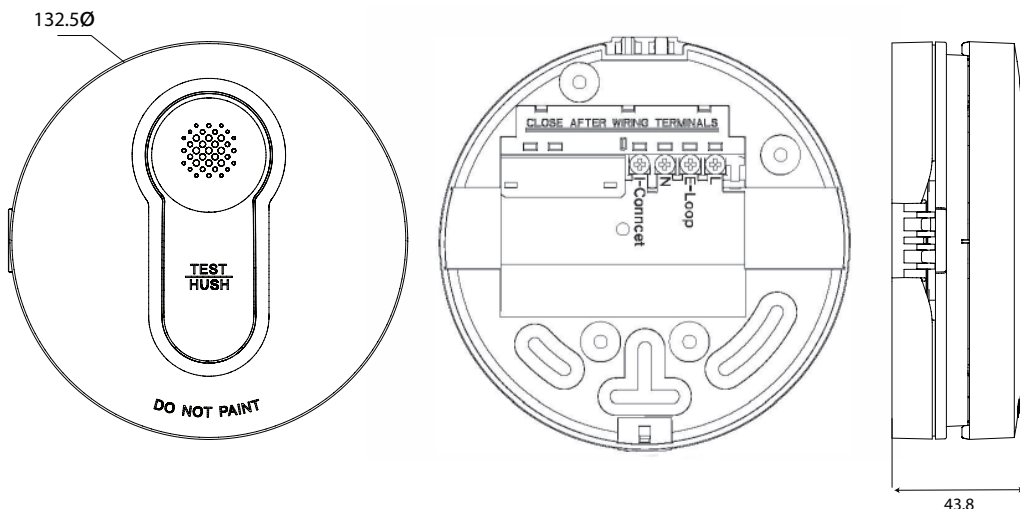
Do not use any cleaning sprays - only wipe down with damp cloth or rub with dry cloth. (Do not use an abrasive cloth as it may scratch the plastic).

Do not use harsh chemical cleaners as these can break down the plastic and cause it to crack.

Do not wash the cover plates in water over 60°C.

Bear Photoelectric Smoke Alarm

- Photoelectric Sensing Technology.
- Complies with AS 3786:2014+A 1 :2015+A2:2018.
- Main power source 220-240V AC 50 Hz.
- Secondary power source Suitable batteries: GP DC 9V carbon battery or PAKKO DC 9V carbon battery; or EVE DC 9V Lithium battery; or Raymax DC 9V Alkaline battery.
- Interconnection Max. 24 alarms (wired 150m maximum).
- 4 hard wired Terminals that accommodate 2 x 2.5mm² (A, E-Loop, N, I-connect) for hard wired applications.
- Surface Mount Base Plate with Large Cable Terminals.
- Suitable for Ceiling or Wall Mounting.
- Alarm volume ≥ 85dB(A) @ 3m complying with ISO8201 alarm pattern.
- Operating Temperature 0 °C to 40 °C.
- Ambient for installation: 5-95% Relative Humidity.
- Red LED Alarm Status Indication.
- Green LED AC Mains Power Indication.
- Insect Screen protects Sensing Chamber.
- Sleek Styling.
- Includes wall dog screws
- 10 Year warranty.
- Warning - Not Suitable to Connect With BESMOKEY 10 Series.
- Standard colour is white. Black also stocked - please check availability.



Catalogue Number	Description
BESMOKEYV2	Smoke Alarm Photoelectric Surface Mount 220 240V ac 9V Battery Single or Interconnect
BESMOKEYV2BK	Smoke Alarm Photoelectric Surface Mount 220 240V ac 9V Battery Single or Interconnect, Black

Certification Number:
SMK41382

GSM Electrical (Australia) Pty Ltd
Level 2, 142-144 Fullarton Road, Rose Park SA 5067
P: 1300 301 838 F: 1300 301 778 E: service@gsme.com.au
www.gsme.com.au



Standard: AS 3786-2014
Licence Number: SMK41282

Data Specification Sheet
September 2025



BESMOKEYV2 BESMOKEYV2BK



Page 2 of 2

Cleaning Guide:

Spraying cleaning products on to electrical products is not recommended.

It is important to ensure that switches are turned off before cleaning.

Do not use any cleaning sprays - only wipe down with damp cloth or rub with dry cloth. (Do not use an abrasive cloth as it may scratch the plastic).

Do not use harsh chemical cleaners as these can break down the plastic and cause it to crack.

Do not wash the cover plates in water over 60°C.

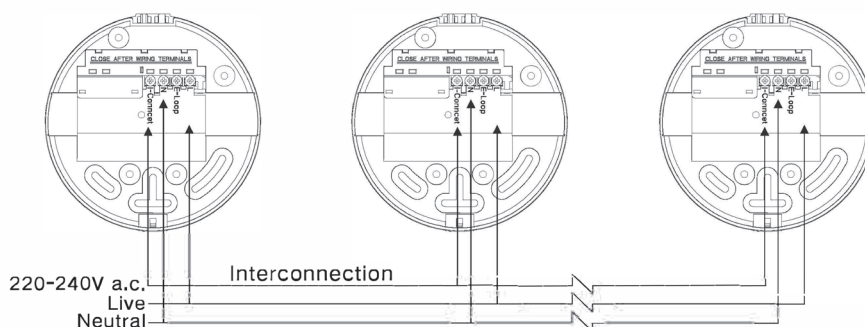
Bear Photoelectric Smoke Alarm

Wiring Instructions:



TERMINAL

L	:	Live
E-Loop	:	Earth 
N	:	Neutral
I-Connect	:	Interconnection



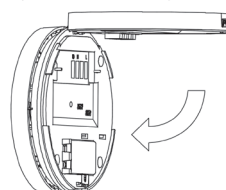
Replace Battery Instructions:

Note: After replacing battery press the TEST button to ensure it is connected and working correctly.

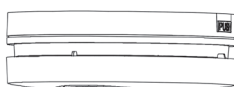
① Press the PUSH button



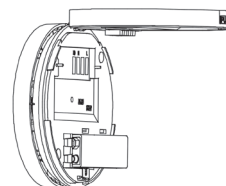
② Open the alarm body from base



④ Close the alarm body.



③ Replace a new battery



Certification Number:

SMK41382

GSM Electrical (Australia) Pty Ltd

Level 2, 142-144 Fullarton Road, Rose Park SA 5067

P: 1300 301 838 F: 1300 301 778 E: service@gsme.com.au

www.gsme.com.au



Standard: AS 3786-2014
Licence Number: SMK41282

Data Specification Sheet
231115



BESMOKEYV2SK BESMOKEYV2SKBK

BESMOKEYV2XL

Cleaning Guide:

Spraying cleaning products on to electrical products is not recommended. It is important to ensure that switches are turned off before cleaning.

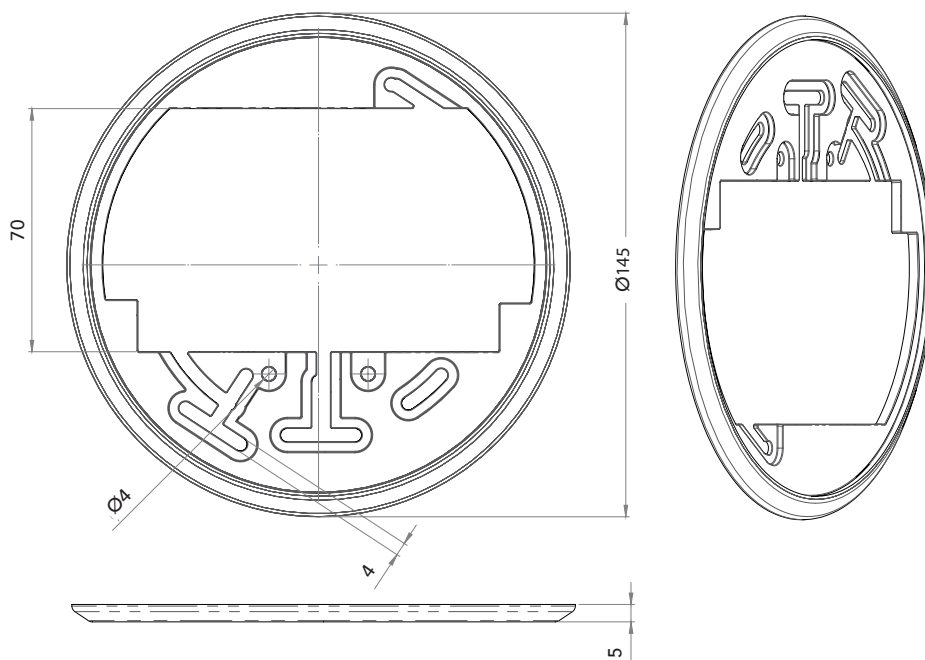
Do not use any cleaning sprays - only wipe down with damp cloth or rub with dry cloth. (Do not use an abrasive cloth as it may scratch the plastic).

Do not use harsh chemical cleaners as these can break down the plastic and cause it to crack.

Do not wash the cover plates in water over 60°C.

Smoke Alarm Skirt

- Skirt to suit BESMOKEYV2 and BESMOKEY10 Series to enable 145mm ceiling coverage.
- Perfect for covering miss matched paint marks from old smoke detectors



Smoke Alarm Photoelectric & Smoke Alarm Skirt Bundle

- BESMOKEYV2XL is a bundle of the BESMOKEYV2 and BESMOKEYV2SK
- Please see BESMOKEYV2 for more detail.



Catalogue Number	Description
BESMOKEYV2XL	Smoke Alarm Photoelectric Surface Mount, 220-240V AC 9V Battery Backup, Individual or Interconnected Bundled with BESMOKEYV2SK
BESMOKEYV2SK	Smoke Alarm Skirt Suitable with BESMOKEYV2 and BESMOKEY10
BESMOKEYV2SKBK	Smoke Alarm Skirt Suitable with BESMOKEYV2 and BESMOKEY10 Black

GSM Electrical (Australia) Pty Ltd

Level 2, 142-144 Fullarton Road, Rose Park SA 5067

P: 1300 301 838 F: 1300 301 778 E: service@gsme.com.au

www.gsme.com.au



Data Specification Sheet
May 2024