



Zimi Smoke Connect

Smart Wireless Module ZSC-SS

Adds wireless functionality to the ZSC-MW

Features

- Activfire Listed when installed with ZSC-MW
- Adds wireless connectivity to the Zimi Smoke Connect Mains Wired smoke alarm (ZSC-MW)
- 7 Year warranty



Smarter Features with ZSC-MW

- Upgrades the ZSC-MW with smart capabilities
- Allows multiple ZSC-RF to connect wirelessly
- Enables a wireless smesh smoke alarm network
- Monitor and manage with your smart device

Specifications

Wireless distance	>60m in clear line of sight
Wireless frequency	433.42.MHz
Interconnection	Up to seven (7) Zimi Smoke Connect Wireless alarms (ZSC_RF)
Temperature range	0°C to 40°C
Relative humidity	5 to ≤ 93 %
Complies with	AS/NZS4268 (ZSC-SS) AS 3786:2014 (when installed in ZSC-MW)



ZSC-SS

Standards Approval:

AS/NZ60669.2.1 & AS/NZS CISPR15

Certification Number:

Active Fire: afp-3735 with ZSC-MW

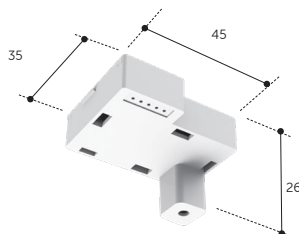


Product info

zimi.life/product/smoke-connect/

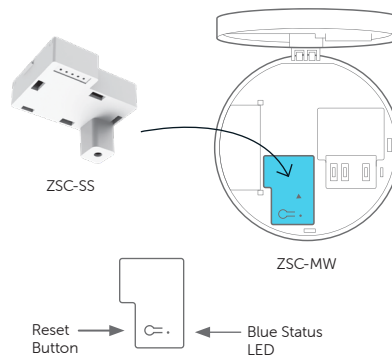


Dimensions (mm)

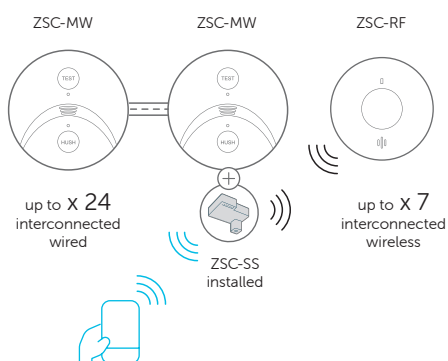


Installation

Read instructions before attempting to install.



Interconnection



Zimi Limited. 14 Millennium Circuit,
Helensvale, QLD 4212 Australia. www.zimi.life

Need help?

email support@zimi.life
visit <https://support.zimi.life>



Zimi App
Scan the code
to download.



Powermesh products must be installed by a qualified electrician. Zimi requires a compatible (Android, iOS) mobile device, minimum OS requirements are available at www.zimi.life. Availability and performance of certain features are service, device and network-dependent and may not be available in all areas; subscription(s) may be required, and additional terms, conditions and/or charges may apply. All features, functionality and other product specifications are subject to change without notice or obligation. Powermesh products are optimised for the use with the Zimi App. The Bluetooth word mark and logos are registered trademarks owned by the Bluetooth SIG, Inc. iOS is a trademark or registered trademark of Apple Inc. Zimi and Powermesh and their respective logos are registered trademarks of Zimi Ltd. Google and Google Play are trademarks of Google LLC. Amazon, Alexa, and all related logos are trademarks of Amazon.com, Inc. or its affiliates. Apple, the Apple logo, Apple Watch and iPhone are trademarks of Apple Inc., registered in the U.S. and other countries. App Store is a service mark of Apple Inc., registered in the U.S. and other countries. Copyright © 2022 Zimi Ltd. All rights reserved.