

**METVFCM**  
**METVFFCMFX**  
**METVFFCMFXBK**  
**METVFFA90FX**

\*See current catalogue for further detail

**Cleaning Guide:**

Spraying cleaning products on to electrical products is not recommended. It is important to ensure that switches are turned off before cleaning.

Do not use any cleaning sprays - only wipe down with damp cloth or rub with dry cloth. (Do not use an abrasive cloth as it may scratch the plastic).

Do not use harsh chemical cleaners as these can break down the plastic and cause it to crack.



## Meerkat Range of TV Mechs

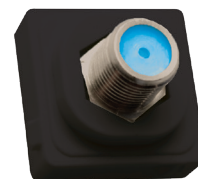
**METVFCM**

- TV Socket F Type to PAL Modular Clip
- Clip in mechanism is made from UV stabilised polycarbonate to avoid discolouring to yellow
- Colour: White



**METVFFCMFX**

- TV Socket, F to F Type Connection Modular Clip Foxtel Approved F30561
- Clip in mechanism is made from UV stabilised polycarbonate to avoid discolouring to yellow
- Colour: White and Black



**METVFFA90FX**

- TV Socket, F to F Type Connection Adapter 90° Foxtel Approved F30573



Catalogue Number	Description
METVFCM	TV Socket F Type to PAL Modular Clip
METVFFCMFX	TV Socket, F to F Type Connection Modular Clip Foxtel Approved
METVFFCMFXBK	TV Socket, F to F Type Connection Modular Clip Foxtel Approved, Black
METVFFA90FX	TV Socket, F to F Type Connection Adapter 90° Foxtel Approved