

MERJ5CM
MERJ6CM
MERJ6CMBK
MERJ45PH8P4C

*See current catalogue for further detail

Note:
MERJ5CM was CORJ5CM
MERJ6CM was CORJ6CM

Cleaning Guide:

Spraying cleaning products on to electrical products is not recommended. It is important to ensure that switches are turned off before cleaning.

Do not use any cleaning sprays - only wipe down with damp cloth or rub with dry cloth. (Do not use an abrasive cloth as it may scratch the plastic).

Do not use harsh chemical cleaners as these can break down the plastic and cause it to crack.



Meerkat Range of Data Mechs

MERJ5CM - Cat5e Data Jack Clip in Mech

- Approved to AS/CA S008
- Clips into standard plate aperture
- Terminates with both the Krone[#] and 110 tools
- Colour: White



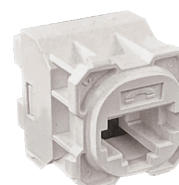
MERJ6CM - Cat6 Data Jack Clip in Mech (White)
MERJ6CMBK - Cat6 Data Jack Clip in Mech (Black)

- Approved to AS/CA S008
- Clips into standard plate aperture
- Terminates with both the Krone[#] and 110 tools



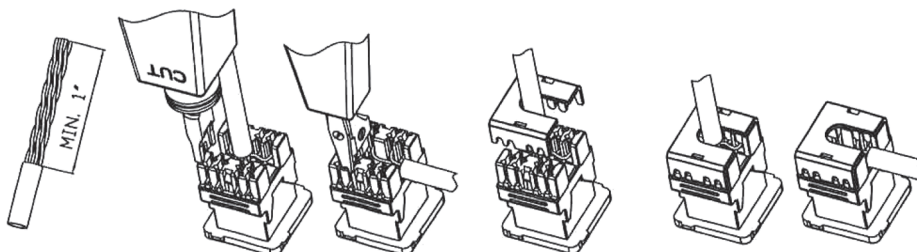
MERJ45PH8P4C

- Approved to AS/CA S008
- Clips into standard plate aperture
- Terminates with the Krone[#]
- Has phone symbol on front of jack
- Contains four (4) contact termination points
- Colour: White



[#]Krone is a registered trademark of Krone G.m.b.H

THIS TERMINATION INSTRUCTION IS FOR MERJ5CM AND MERJ6CM ONLY



STEP 1:
Strip off at least 1 inch of jacket from end of cable.

STEP 2:
Insert wires into IDC's according to the desired wiring configuration (T568B/T568A). Terminate wires using punch down tool. Make sure the tool is set to trim excess wire as shown.
*Do not untwist the wire pairs until the punch down tool has trimmed them flush.

STEP 3:
Place termination cap on jack and press cap to make sure it is fully seated.

STEP 4:
Adjust the cable to a suitable position in the opening of the cap.

Catalogue Number	Description
MERJ5CM	Data Outlet Clip in Mech - Cat5e
MERJ6CM	Data Outlet Clip in Mech - Cat6 - White
MERJ6CMBK	Data Outlet Clip in Mech - Cat6 - Black
MERJ45PH8P4C	RJ45 Cat3 Phone Jack

Note: MERJ5CM was CORJ5CM / MERJ6CM was CORJ6CM

Certification:

Test Reports: Austest 0318GSM_CORJ5CM_S008
Test Reports: Austest 0321GSM_CORJ6CM_S008
Test Report : Australian Communications Laboratory
Pty Ltd ACL 1270 (for MERJ45PH8P4C)

GSM Electrical (Australia) Pty Ltd

Level 2, 142-144 Fullarton Road, Rose Park SA 5067
P: 1300 301 838 F: 1300 301 778 E: service@gsme.com.au

www.gsme.com.au



Data Specification Sheet
January 2020