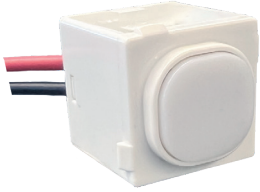


**MENLML**



**Cleaning Guide:**

Spraying cleaning products directly on to electrical switches or power points (sockets) is not recommended.

It is important to ensure that switches are turned off before cleaning.

Do not use any cleaning sprays - only wipe down with damp cloth or rub with dry cloth. Do not use an abrasive cloth as it may scratch the plastic.

Do not use harsh chemical cleaners as these can break down the plastic and cause it to crack.



## Meerkat Nightlight Push Button Mech, Multi Level Control, 230-250V~

Push-Button Multi-level nightlight for access areas, passageways, corridors, utility rooms.

Provides sufficient light to see outlines of objects.

**Made compact for a reason:**

- Fits all Trader apertures, switches and power points with removable extra switch mechanisms: Snow Leopard, Clouded leopard, Leopard, Puma, Flat Cat and Cougar ranges.
- Three levels of brightness, push-button activated:

**Level 1:** (Press once)

Brightness: 160 lux max (no lumens. Lumens cannot be measured due to light output too low)

Light temperature: 1800-2000 K warm white

Power: 250V 0.4W 0.00016A

**Level 2:** (Press twice)

Brightness: 440 lux max

Light temperature: 1800-2000 K warm white

Power: 250V 0.4W 0.0016A

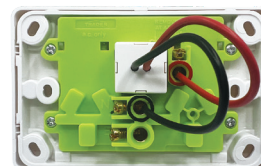
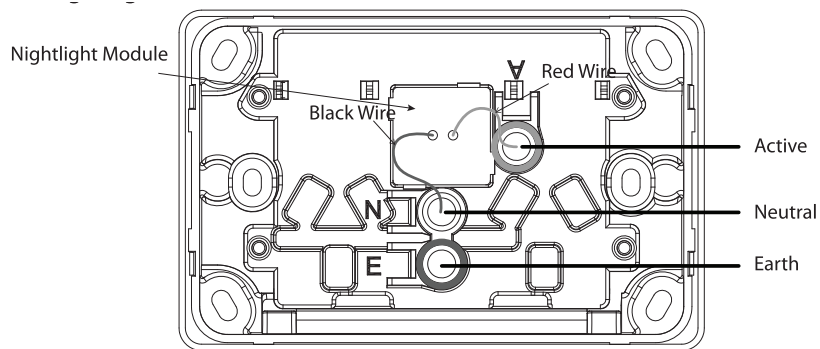
**Level 3:** (Press three times)

Brightness: 800 lux max

Light temperature: 1800-2000 K warm white

Power: 230-250V 0.4W 0.0016A

- Original State, OFF: (Press four times)
- Standby Power in Original State, OFF: 250V 0.3W 0.0012A



Catalogue Number	Description
MENLML	Nightlight Push Button Mech, Multi Level Control, 230-250V~

**Certification Number:** GMA-511872

**GSM Electrical (Australia) Pty Ltd**

Level 2, 142-144 Fullarton Road, Rose Park SA 5067

P: 1300 301 838 F: 1300 301 778 E: service@gsm.com.au

[www.gsm.com.au](http://www.gsm.com.au)

