

OWPIROD OWPIRODBK OWPIRODLO OWPIRODLOBK



Cleaning Guide:

Spraying cleaning products on to electrical products is not recommended. It is important to ensure that switches are turned off before cleaning.

Do not use any cleaning sprays - only wipe down with damp cloth or rub with dry cloth. (Do not use an abrasive cloth as it may scratch the plastic).

Do not use harsh chemical cleaners as these can break down the plastic and cause it to crack.



Arctic Owl Outdoor Infrared Sensor

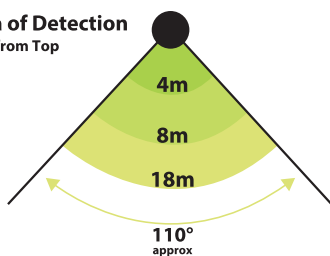
- Sensor uses Passive Infrared technology
- OWPIROD models can be manually overridden with built-in override function.
- OWPIRODLO models can be overridden with separate override switches.
- 110° detection up to 18 metres
- Suitable for installing on walls and ceiling both interior and exterior
- Fits standard mounting blocks using 84mm centres (example: HYSMB2025)
- 3 wire design (Active, Neutral, Sensor load) for greater reliability
- Relay in circuit allows for loads up to 2400W (incandescent)
- Easy mounting and adjustment
- Easy sensing, light level and on time adjustment
- LED compatible
- IP66 Rating
- Minimum load <10W
- Must be installed by a licenced electrician
- Screw caps included
- Colours available: Beige or Black

Product Specification

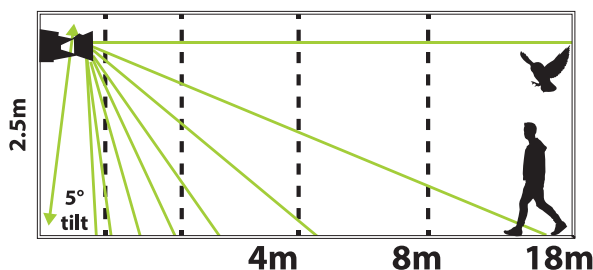
Voltage	220-240V/AC
Time Duration	10 seconds to 30 minutes (time button is adjustable)
Time Delay	Minimum: 5 -10 seconds on initial power up at installation
Detection Method	Passive Infrared
Detection Angle	Up to 110°
Lux Control Level	<2 LUX
Detection Distance	Up to 18m depending on installation variable
Load	2400W incandescent / 1200W inductive
Power Consumption	0.7W
SBL-LED	400W

Catalogue Number	Description
OWPIROD	Passive Infrared Outdoor Sensor IP66 3 Wire Angle 110 degrees 18 metre detection
OWPIRODBK	Passive Infrared Outdoor Sensor IP66 3 Wire Angle 110 degrees 18 metre detection, Black
OWPIRODLO	Passive Infrared Outdoor Sensor IP66 3 Wire Angle 110 degrees 18 metre detection, Less Override
OWPIRODBKLO	Passive Infrared Outdoor Sensor IP66 3 Wire Angle 110 degrees 18 metre detection, Black, Less Override

Area of Detection View from Top



Elevated View



Certification Number:

GMA-515865

GSM Electrical (Australia) Pty Ltd

Level 2, 142-144 Fullarton Road, Rose Park SA 5067
P: 1300 301 838 F: 1300 301 778 E: service@gsme.com.au
www.gsme.com.au



Data Specification Sheet
240802

**OWPIROD180
OWPIROD180BK**



Cleaning Guide:

Spraying cleaning products on to electrical products is not recommended. It is important to ensure that switches are turned off before cleaning.

Do not use any cleaning sprays - only wipe down with damp cloth or rub with dry cloth. (Do not use an abrasive cloth as it may scratch the plastic).

Do not use harsh chemical cleaners as these can break down the plastic and cause it to crack.

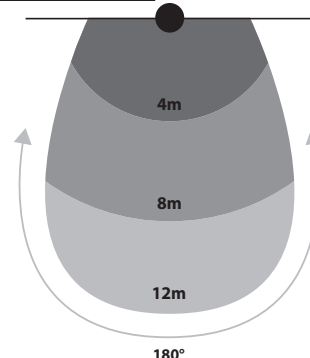
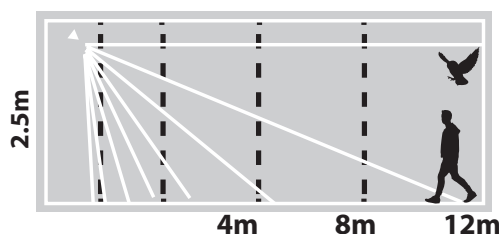


Arctic Owl Infrared Motion Sensor 180°

- Sensor uses Passive Infrared Technology.
- Manual override for greater convenience.
- 180-degree detection with range of 12m at a height of 1.8m - 2.5m.
- "ON" time between 10 seconds and 10 minutes - between sensing triggers.
- 3 wire design (Active, Neutral, Sensor load) for greater reliability.
- Easy mounting and adjustment.
- Suitable for installing on walls and ceiling both interior and exterior
- Easy light level and on time adjustment
- Rated Load: 1200W Max and 300W for fluoro energy saving lamps.
- LED compatible
- IP44
- Must be installed by a licenced electrician
- Colours available: Beige or Black.

Specifications

Power Source	220-240V/AC
Power Frequency	50Hz
Power Consumption	0.75W
Rated Load	1200W max Tungsten/Incandescent 300W max Fluorescent 100W LED (SBL)
Detection Angle	180°
Working Temperature	-10°C ~ +40°C
Working Humidity	<93%RH
Installation Height	1.8m~2.5m
Detection Motion Speed	0.6-1.5m/s
Weather Protection	IP44
Time Delay	min:10sec±3sec max: 10min±2min Light-control : <3LUX- daylight (adjustable) Detection



Catalogue Number	Description
OWPIROD180	Motion Sensor Passive Infrared Outdoor IP44 180 Degrees 12 Metre Detection
OWPIROD180BK	Motion Sensor Passive Infrared Outdoor IP44 180 Degrees 12 Metre Detection Black

Certification Number:

GMA-514568

GSM Electrical (Australia) Pty Ltd

Level 2, 142-144 Fullarton Road, Rose Park SA 5067

P: 1300 301 838 F: 1300 301 778 E: service@gsme.com.au

www.gsme.com.au



Data Specification Sheet
February 2025

**OWPIR360RS
OWPIR360RSBK**



Cleaning Guide:

Spraying cleaning products on to electrical products is not recommended. It is important to ensure that switches are turned off before cleaning.

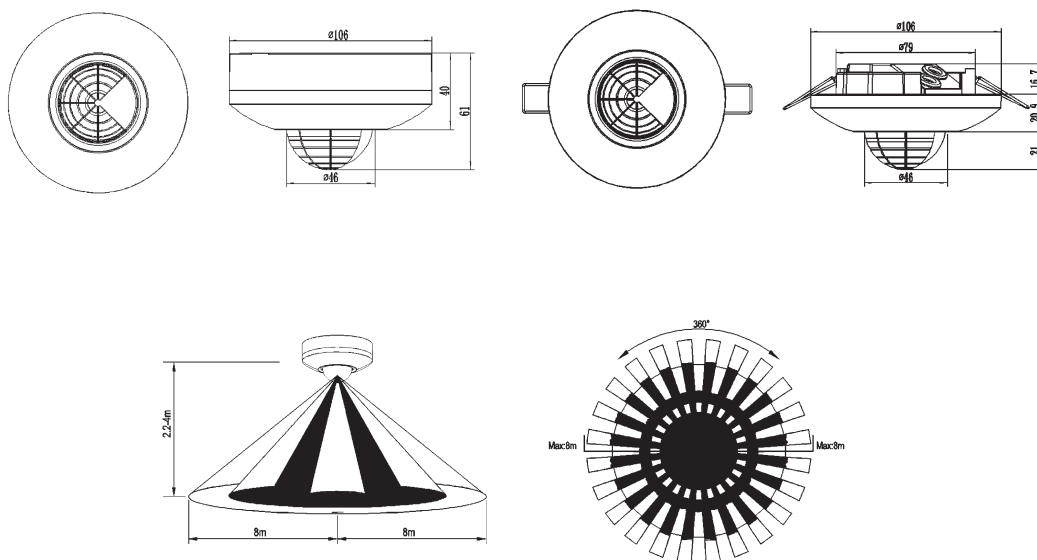
Do not use any cleaning sprays - only wipe down with damp cloth or rub with dry cloth. (Do not use an abrasive cloth as it may scratch the plastic).

Do not use harsh chemical cleaners as these can break down the plastic and cause it to crack.



Arctic Owl Infrared Motion Sensor Outdoor 360° Detection Recess or Surface Mount

- Sensor uses Passive Infrared Technology.
- Manual override.
- Comes with accessories to allow it to be fitted both as recessed mount where it clips into the hole in the ceiling or as surface mounting with a rear housing mounted to the ceiling surface.
- 360 degree detection with range of 8m radius at a height of 2.2m - 4m.
- "ON" time between 10 seconds and 30 minutes - between sensing trigger.
- Easy mounting and adjustment.
- Parallel connections with multiple fittings.
- Rated Load: 2000W Max and 1000W for fluoro energy saving lamps.
- SBL (LED): 400W
- 85mm cut out.
- Colours available: White & Black
- Depth into ceiling 20mm.
- IP44



Catalogue Number	Description
OWPIR360RS	Motion Sensor Passive Infrared Outdoor IP44 360 Degrees 8 Metre Detection Mounting Recessed or Surface
OWPIR360RSBK	Motion Sensor Passive Infrared Outdoor IP44 360 Degrees 8 Metre Detection Mounting Recessed or Surface Black

Certification Number:

GMA-515322

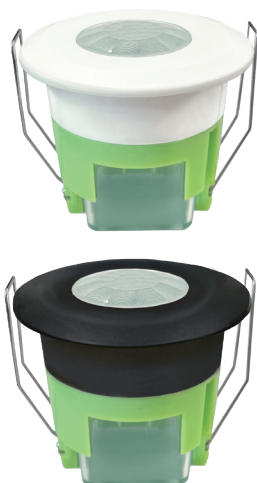
GSM Electrical (Australia) Pty Ltd

Level 2, 142-144 Fullarton Road, Rose Park SA 5067
P: 1300 301 838 F: 1300 301 778 E: service@gsme.com.au
www.gsme.com.au



Data Specification Sheet
August 2025

**OWPIR360
OWPIR360BK**



Cleaning Guide:

Spraying cleaning products on to electrical products is not recommended. It is important to ensure that switches are turned off before cleaning. Do not use any cleaning sprays - only wipe down with damp cloth or rub with dry cloth. (Do not use an abrasive cloth as it may scratch the plastic). Do not use harsh chemical cleaners as these can break down the plastic and cause it to crack.

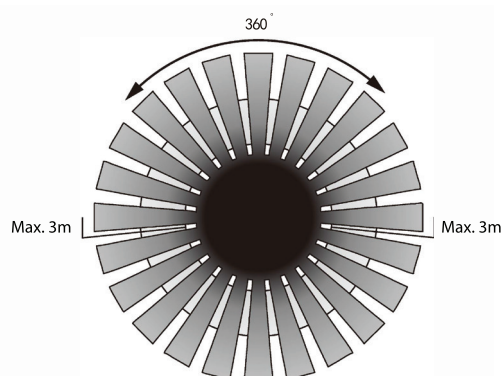
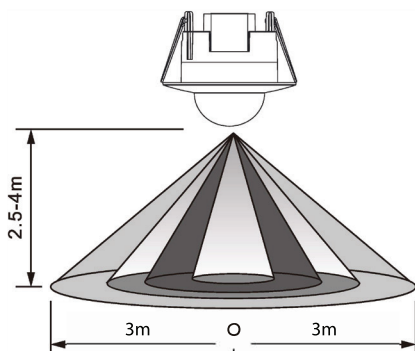


Arctic Owl Infrared Motion Sensor Indoor 360°

- Sensor uses Passive Infrared Technology.
- Manual override.
- 360 degree detection with range of 3m radius at a height of 2.4m - 4m.
- "ON" time between 10 seconds and 7 minutes - between sensing trigger.
- Suitable for loop in / loop out applications in ceilings.
- Easy mounting and adjustment.
- Parallel connections with multiple fittings.
- Rated Load: 2000W Max and 1000W for fluoro energy saving lamps.
- SBL (LED): 300W
- 63mm cut out.
- Colours available: White or Black.
- Depth into ceiling 57mm.
- Larger Terminals.

Specifications

Detection Range:	360°
Detection Distance:	3m max (<24°C)
Time-Delay / 'Switch On' Duration:	Min. 10sec±3sec
	Max. 7min±2min
Installing Height:	2.2m - 4m
Power Consumption:	<0.9W
Power Sourcing:	220V/AC-240V/AC
Power Frequency:	50/60Hz
Working Temperature:	-20 > +40°C
Ambient Light:	<5-2000LUX (Adjustable)
Rated Load:	2000W (incandescent lamp)
	1000W (energy-saving lamp)
Working Humidity:	<93%RH
Detection Motion Speed:	0.6 - 1.5m/s
SBL (LED)	300W



Catalogue Number	Description
OWPIR360	Motion Sensor Passive Infrared Indoor 360 Degrees 3 Metre Detection 63mm Cut Out
OWPIR360BK	Motion Sensor Passive Infrared Indoor 360 Degrees 3 Metre Detection 63mm Cut Out, Black

Certification Number:

GMA-508473

GSM Electrical (Australia) Pty Ltd

Level 2, 142-144 Fullarton Road, Rose Park SA 5067
P: 1300 301 838 F: 1300 301 778 E: service@gsme.com.au
www.gsme.com.au



Data Specification Sheet
February 2025

OWPIR360S
OWPIR360SBK



Cleaning Guide:

Spraying cleaning products on to electrical products is not recommended. It is important to ensure that switches are turned off before cleaning.

Do not use any cleaning sprays - only wipe down with damp cloth or rub with dry cloth. (Do not use an abrasive cloth as it may scratch the plastic).

Do not use harsh chemical cleaners as these can break down the plastic and cause it to crack.

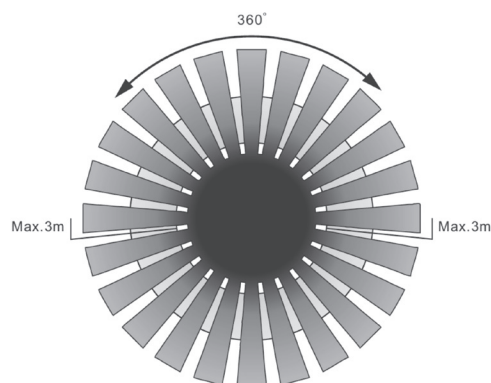
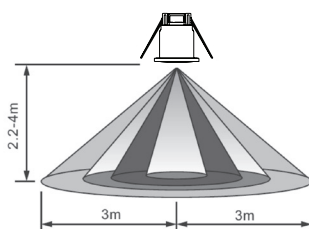


Arctic Owl Infrared Motion Sensor Indoor 360° Small

- Sensor uses Passive Infrared Technology.
- Manual override for greater convenience.
- 360 degree detection with range of 3m radius at a height of 2.4m - 4m.
- "ON" time between 10 seconds and 7 minutes - between sensing trigger.
- Suitable for loop in / loop out applications in ceilings.
- Easy mounting and adjustment.
- Parallel connections with multiple fittings.
- Rated Load: 800W Max and 400W for fluoro energy saving lamps.
- SBL (LED): 100W
- 40mm cut out.
- Colours available: White or Black.
- Depth into ceiling 51mm.
- Larger Terminals.

Specifications

Detection Range:	360°
Detection Distance:	3m radius max (<24°C)
Time-Delay / 'Switch On' Duration:	Min. 10sec±3sec
	Max. 7min±2min
Installing Height:	2.2m - 4m
Power Consumption:	<0.9W
Power Sourcing:	220V/AC-240V/AC
Power Frequency:	50/60Hz
Working Temperature:	-20 > +40°C
Ambient Light:	<10-2000LUX (Adjustable)
Rated Load:	800W (incandescent lamp)
	400W (energy-saving lamp)
Working Humidity:	<93%RH
Detection Motion Speed:	0.6 - 1.5m/s
SBL (LED)	100W



Catalogue Number	Description
OWPIR360S	Motion Sensor Passive Infrared Indoor 360 Degrees 3 Metre Detection 40mm Cut Out Small
OWPIR360SBK	Motion Sensor Passive Infrared Indoor 360 Degrees 3 Metre Detection 40mm Cut Out Small, Black

Certification Number:

GMA-508473

GSM Electrical (Australia) Pty Ltd

Level 2, 142-144 Fullarton Road, Rose Park SA 5067
P: 1300 301 838 F: 1300 301 778 E: service@gsme.com.au
www.gsme.com.au



Data Specification Sheet
February 2025