

BUSW220CO
BUSW320R

BUSW220COLE
BUSW320RLE



Rotary Cam-Switch Control



IP66 Changeover & Reversing Switches

Buffalo's Two Pole 20A Changeover & Three Pole 20A Forward/Reversing Switches are housed within IP66 single modules as part of the overall modular concept of the range.

Provided with Rotary Cam Switch control with clear escutcheon marking:

- Changeover marked '1-0-2'
- Forward OFF Reverse marked 'F-0-R'

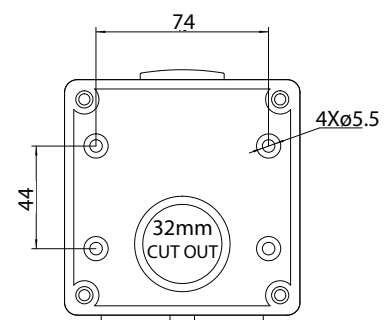
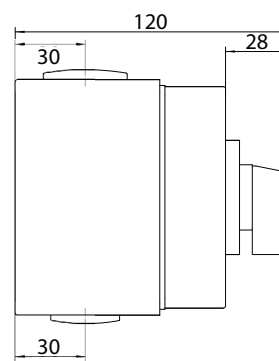
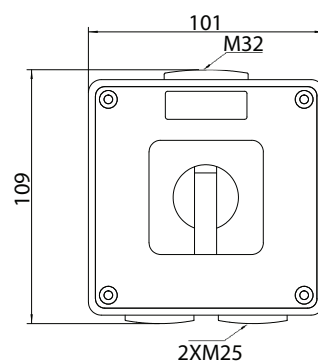
Earth and neutral connectors accommodating 3 x 6mm² cables are provided with all models.

Approved to AS/NZS3133.

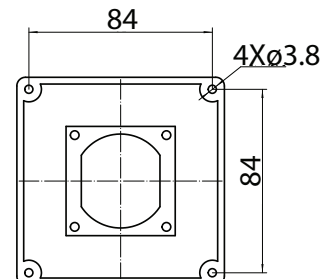
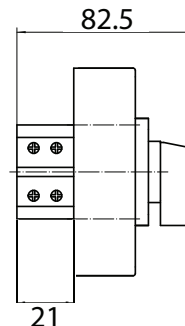
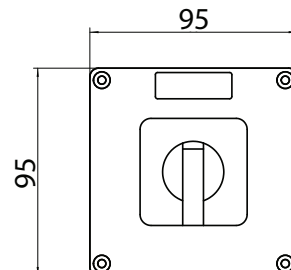


Pole & Volt	Cat No.	Current Rating (Nominal) (A)	Conduit Entries	Rear Cut-Outs dia.
2 Pole 500V~	BUSW220CO	20	2 x 25mm 1 x 32mm	1 x 32mm
3 Pole 500V~	BUSW320R	20	2 x 25mm 1 x 32mm	1 x 32mm

When ordering **LESS ENCLOSURE** add "LE" at end of catalogue number, ie "BUSW220COLE"



Less Enclosure



Certification Number:
GMA-516354-EA

GSM Electrical (Australia) Pty Ltd

Level 2, 142-144 Fullarton Road, Rose Park SA 5067
P: 1300 301 838 F: 1300 301 778 E: service@g sme.com.au
www.gsme.com.au



Data Specification Sheet
September 2023