

BUSW110*

BUSW120*

BUSW132*

BUSW210

BUSW220

BUSW232

BUSW310

BUSW320

BUSW332

BUSW350^

BUSW363

BUSW420

BUSW432

BUSW463

BUSW110LE*

BUSW120LE*

BUSW132LE*

BUSW210LE

BUSW220LE

BUSW232LE

BUSW310LE

BUSW320LE

BUSW332LE

BUSW350LE^

BUSW363LE

BUSW420LE

BUSW432LE

BUSW463LE

* Products being phased out and being superseded by 2 pole versions.

^BUSW350 Series to be phased out, alternative is BUSW363 Series.

PAGE 1 of 2

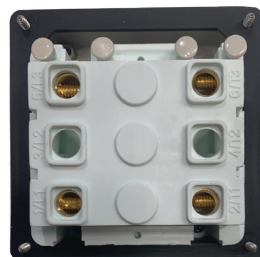


IP66 Heavy Duty Switches / Switch Disconnectors

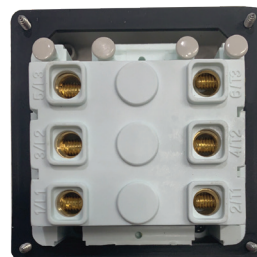
- The Buffalo switches have recently been updated with testing for categorization for Isolation and are now marked for use as switch disconnectors.
- The 10A to 20A models have been certified in accordance with AS/NZS3133 and 10A,20A,32A, and 63A have also been tested complied with IEC and AS 60947-3 with the 32A and 63A models being listed on a certificate of suitability.
- The same heavy duty switches are used in our Combinations are available as individual switches for isolation and control applications.
- Heavy Duty terminals with diameter 7.6mm terminals suitable for 25mm² cable.
- Switch supplied with a large, easy to use knob, suitable for use with heavy industrial gloves. Has a positive, rotary action.
- Switch Knob features two Oval Shape (11 x 9mm) lock off facilities. Suits 9.0mm padlock staple.
- Conduit plugs provided with rubber gaskets to assist IP rating and to aid secure fitment.
- Raised ON/OFF marking to allow visibility in dusty environments.
- Laser etched product marking (no adhesive labels that fall off).
- LED Drill out facility for LED indicators (not supplied).
- Approved to AS/NZS3133 (10A - 20A), AS 60947-3 (Over 32A).(All models tested in accordance and comply with both standards)
- BUSW463 is fitted with a deep enclosure.
- Range includes Single*, Double, Three Pole, as well as Four Pole in amperages from 10A up to 63A. See the table for product detail as some configurations vary.
- All models have been tested and comply with AS/NZS 3133 M200 motor rating as shown in the table.
- In addition, the Utilization category of AC23A for motors and highly inductive loads is rated at Ie=10A for the 10A models, Ie=20A for 20A and 32A Models and Ie=25A for 63A.
- Pollution Degree: 2
- Recommended screw torque for corner cover screws 0.6Nm
- Recommended torque for Earth/Neutral fixed terminals 2Nm
- Recommended torque for Switch terminals 2.5Nm



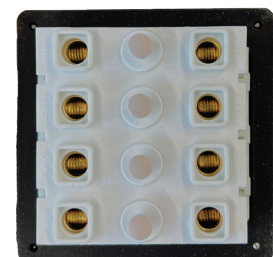
Heavy Duty Switch Terminals



2 Pole



3 Pole



4 Pole

Certification Number:

BUSW110, BUSW210, BUSW120, BUSW220,
BUSW310, BUSW320: SAA-212017-EA
BUSW232, BUSW332, BUSW340, BUSW350, BUSW363: SAA212342

GSM Electrical (Australia) Pty Ltd

Level 2, 142-144 Fullarton Road, Rose Park SA 5067
P: 1300 301 838 F: 1300 301 778 E: service@g sme.com.au
www.g sme.com.au



Data Specification Sheet
September 2023

BUSW110*
BUSW120*
BUSW132*
BUSW210
BUSW220
BUSW232
BUSW310
BUSW320
BUSW332
BUSW350^
BUSW363
BUSW420
BUSW432
BUSW463



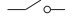









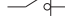
BUSW110LE*
BUSW120LE*
BUSW132LE*
BUSW210LE
BUSW220LE
BUSW232LE
BUSW310LE
BUSW320LE
BUSW332LE
BUSW350LE^
BUSW363LE
BUSW420LE
BUSW432LE
BUSW463LE

* Products being phased out and being superseded by 2 pole versions.
^BUSW350 Series to be phased out, alternative is BUSW363 Series.

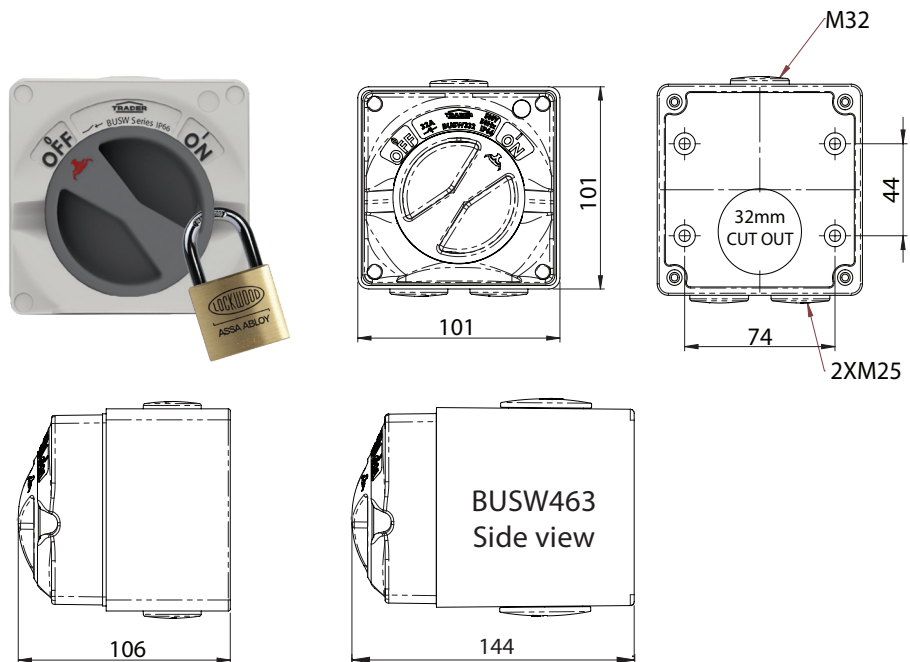
PAGE 1 of 2



IP66 Heavy Duty Switches / Switch Disconnectors

Configuration (Ratings to IEC60947-3/AS 60947-3 and AS/NZS 3133)	Cat No.	Rated Thermal Current Ith	AC23A Rating (Ue=500V~) (Ie=(A))	Motor M Rating (A)	Minimum Conductor Size (mm ²)	Maximum Conductor Size (mm ²)	Symbol
1 Pole Rated performance tested in accordance with AS/NZS 3133 for these models at 250V~.	BUSW110*	10		100	1.5	6	
	BUSW120*	20		150	2.5	16	
	BUSW132*	32		180	6	16	
2 Pole Rated Operational Voltage Ue (50Hz):500V~ Rated Insulation Voltage Ui (~50Hz):690V Rated Short Time Withstand Icw: 1.26kA/1s Rated impulse withstand voltage Uimp (kV): 4.0kV Rated short circuit making capacity Icm (28.4Ie): 1.789kA Uninterrupted Duty	BUSW210	10	10	200	2.5	16	
	BUSW220	20	20	200	2.5	16	
	BUSW232	32	32	200	6	16	
3 Pole Rated Operational Voltage Ue (50Hz):500V~ Rated Insulation Voltage Ui (~50Hz):690V Rated Short Time Withstand Icw: 1.26kA/1s Rated impulse withstand voltage Uimp (kV): 4.0kV Rated short circuit making capacity Icm (28.4Ie): 1.789kA Uninterrupted Duty	BUSW310	10	10	200	2.5	16	
	BUSW320	20	20	200	2.5	16	
	BUSW332	32	32	200	6	16	
	BUSW350^	50	50	250	10	25	
4 Pole Rated Operational Voltage Ue (50Hz):500V~ Rated Insulation Voltage Ui (~50Hz):690V Rated Short Time Withstand Icw: 1.26kA/1s Rated impulse withstand voltage Uimp (kV): 4.0kV Rated short circuit making capacity Icm (28.4Ie): 1.789kA Uninterrupted Duty	BUSW420	20	20	200	2.5	16	
	BUSW432	32	32	200	6	16	
	BUSW463	63	50	200	16	25	

When ordering LESS ENCLOSURE add "LE" at end of catalogue number, ie "BUSW210LE"



Certification Number:

BUSW110, BUSW210, BUSW120, BUSW220,
BUSW310, BUSW320: SAA-212017-EA
BUSW232, BUSW332, BUSW340, BUSW350, BUSW363: SAA212342

GSM Electrical (Australia) Pty Ltd

Level 2, 142-144 Fullarton Road, Rose Park SA 5067
P: 1300 301 838 F: 1300 301 778 E: service@g sme.com.au
www.gsme.com.au



Data Specification Sheet
September 2023