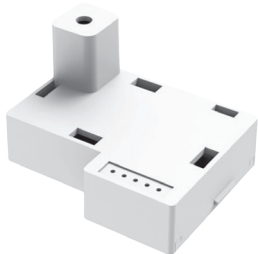


BESMOKEY10WM

*See current catalogue for further detail



Cleaning Guide:

Spraying cleaning products on to electrical products is not recommended. It is important to ensure that switches are turned off before cleaning.

Do not use any cleaning sprays - only wipe down with damp cloth or rub with dry cloth. (Do not use an abrasive cloth as it may scratch the plastic).

Do not use harsh chemical cleaners as these can break down the plastic and cause it to crack.

BESMOKEY10 Smoke Alarms come with a 10 Year Warranty from date of purchase. BESMOKEY10 Accessories are warranted for 7 Years from date of purchase. Proof of Purchase is required for Warranty Claims

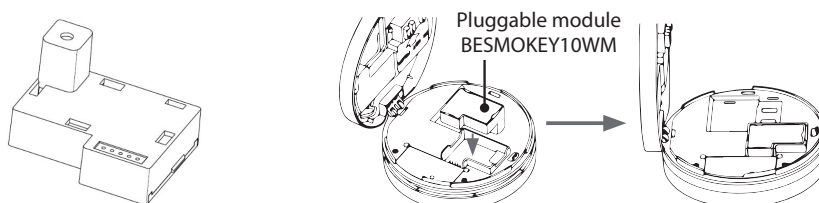
– please see www.gsme.com.au for details regarding warranty claims.

BESMOKEY10WM Wireless Module

- Application: Suitable for TRADER BESMOKEY10 220-240V a.c. smoke alarm .
- Wireless Distance: >60m (clear line of sight).
- Frequency: 433.42MHz.
- Interconnection capacity: Maximum 40 devices .
- Size: 45 x 35 x 26mm.
- Temp range: 0°C - 45°C .
- Max Humidity: 5-95%RH.
- Wireless module complies with AS/NZS4268.
- Alarm Signal Pattern when installed in BESMOKEY10: ISO 8201 and AS 3786:2014 compliant Introducing Wireless Alarm Option into the network with the BESMOKEY1 0WM module.
- This module can be installed into the BESMOKEY10 by first disconnecting the power and opening one of the mains powered alarms, do this before removing the yellow tag for the battery, replace the blank housing with the BESMOKEY10WM wireless module then remove battery tag to connect power.
- The BESMOKEY10WM communicates at 433.42MHz and can operate at range greater than 60m.
- With the power off select one mains wired alarm to be the master for the wireless link and install the BESMOKEY10WM.
- The BESMOKEY10 with BESMOKEY10WM can also pair to BESMOKEY10BW 10 Year Lithium Wireless Smoke Alarm.

Caution: Only install one pluggable BESMOKEY10WM module into a group of mains-wired interconnected alarms. If there is more than one installed with wired connections, it will not work. Follow the instructions provided to pair the wireless alarms in the network.

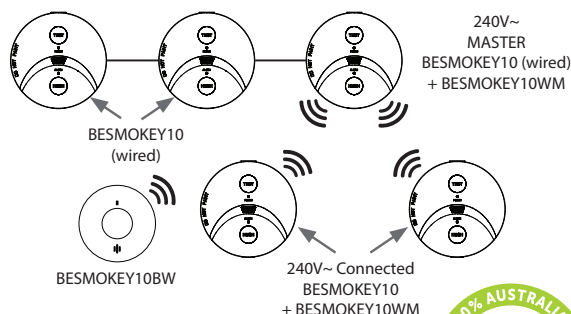
Making BESMOKEY10 Wireless:



To make wireless, before removing battery tag add BEMOKEY10MW, then connect battery and power. Follow instruction to pair the wireless alarms in the network.

Example of a network using BESMOKEY10 combined with hard wired and interconnected (using cable) with a single “master” alarm with the BESMOKEY10MW module fitted communicating with others in the system that are operating from the 10 Year Lithium battery.

NETWORK CONFIGURATION EXAMPLE



Certification Number:

Active Fire: afp-3688 with BESMOKEY10

GSM Electrical (Australia) Pty Ltd

Level 2, 142-144 Fullarton Road, Rose Park SA 5067
P: 1300 301 838 F: 1300 301 778 E: service@gsme.com.au
www.gsme.com.au



Data Specification Sheet
October 2022

