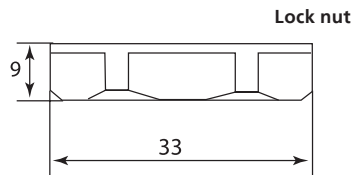
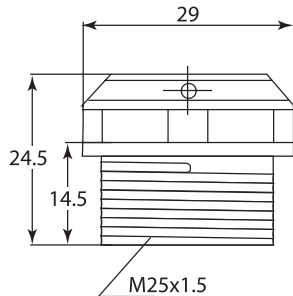
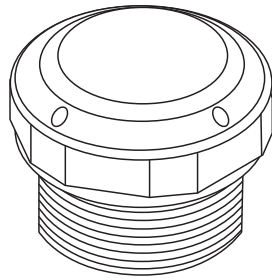
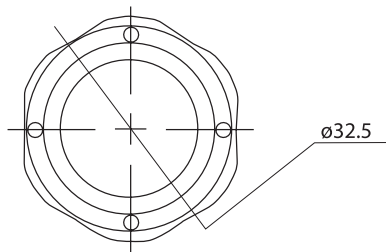


Breather



Application wall thickness is up to 5.0mm when using the lock nut.



INSTRUCTIONS

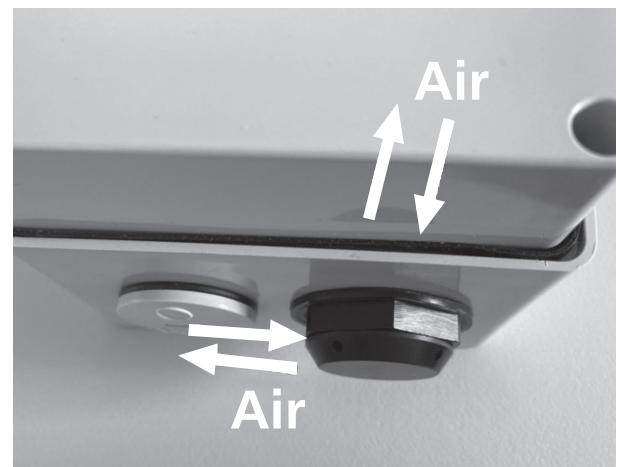
- This product provides continuous pressure equalisation between the inside of the enclosure and the atmosphere around the enclosure. This ventilation prevents moisture from entering the enclosure via the seals and condensing inside the enclosure. The breathers are made from moulded polyamide with a silicone seal and meet the requirements of degrees of protection up to IP68.
- If cyclic temperature conditions where warm air that can contain moisture, is prevented from escaping it can cause internal condensation that forms when cooling, and can build up to cause failures, as the air cools, water droplets settling on live parts and causing electrical faults.
- The breather allows the pressure to equalise internally and externally, and warm air can pass to the outside as the system cools helping to prevent this issue.
- If the wall of the enclosure is thick and pre-threaded for 25mm, then the lock nut is not necessary providing the breather can be tightened against the seal and lock in place. (See Figure 1)
- The BUBR can also be mounted on the side of an enclosure if necessary to assist with air flow.

The kit contains the BUBR breather, lock-nut and flat seal.

Feature:	Specification
Connection Thread	M25 x 1.5
Spanner size	29mm (breather) and 33mm (locknut)
Material	Polyamide
Degree of protection	IP68 (when facing downwards)
Colour	black
Temperature range	-40°C to +125°C
Recommended torque	0.8Nm
Typical airflow	7L/min (dp=70mbar)

Reference Product compliance: Specification
IEC529, 2nd (protection class):IP66, IP67, IP68 (Immersion 2 metres/60minutes) IP69K
IEC60069-2-1,2,14 (Heat Resistance): -40oC~+125 oC
IEC600-2-78 (Humidity Testing): 85o85% humidity~1000 hours
IEC62108.10.8.9 (Solar industry testing): Humidity freeze - High temperature, Hail impact test.
UL94V-0f1 (Flame resistant)

Figure 1



10 Year Manufacturer's Warranty

This product has been manufactured to the highest quality standards. This product is warranted to the original purchaser and is not transferable. GSM Electrical (Australia) Pty Ltd's liability under this warranty is limited to the replacement and/or repair of the defective parts within the warranty period and does not extend to installation or removal of the product. Acceptance of liability by GSM Electrical (Australia) Pty Ltd contained herein is to the exclusion of any other remedy whatsoever and howsoever arising in respect of any equipment to which it applies.