

## BESMOKEY10BW

**Smoke Alarm, Wireless Interconnect, Photoelectric,  
Non Removable Lithium 10 Year Battery Only**



Thank you for purchasing our smoke alarm. This instruction contains important information on the correct installation and operation of your smoke alarm. Read this instruction fully before attempting installation and retain them for future reference.



AS3786:2014

Specifications:	
Detection method	Optical
Power Supply	Built-in DC3V Lithium battery (battery not replaceable)
Battery Lifetime	10 years
Monitored area	40 m <sup>2</sup>
Operating temperature	0 °C - 40 °C
Operating Humidity	< 93 %
Date of replacement	See product label
Individual alarm indicator	Yes
Silence feature (hush mode)	Yes   Hush time: 10±1 minutes
Low battery warning	Yes
Low battery silence facility installation in leisure	Yes   Hush time: 10 hours
Caravan and Motor Home Suitability	No
Mounting Location	Ceiling or wall
Inter-connectable	Yes   max. 40 devices
Wireless frequency	433.42MHz
Wireless distance	Max. 100 metres in free field
Local smoke alarm sound pattern:	ISO 8201 BI 0.5s - pause 0.5s - BI 0.5s - pause 0.5s - BI 0.5s - pause 1.5s, with the red LED flash, repeat this alarm pattern.
Wireless alarm sound pattern	Beep Beep - pause 1s, repeat this alarm pattern.

### Warning:

- Observe and follow all local and national electrical and building codes for installation.
- This product must only be used for the purpose described in these instructions and must be installed in accordance with regulations in local regions.
- The alarm should not be exposed to steam or splashing and that no objects filled with liquids shall be placed in close proximity.

**Failure to follow these instructions may result in death or serious injury.**

Product function description:		
Function	Visual Indication	Audio Indication
<b>Normal Alarm Function</b>	The Red LED flashes every 40 seconds.	None
<b>Test (Button Pressed On Direct Unit)</b> <ul style="list-style-type: none"> <li>Test by pressing the TEST button on the smoke alarm at least 5 seconds.</li> <li>The alarm will sound if all electronic circuitry, horn and battery are working properly. If no alarm sounds, refer to "Trouble Shooting".</li> <li>Unit that is being tested will only sound when test button is pressed, there will be a slight delay before the paired units sound their alarms.</li> </ul>	Flashes once per second for 3 seconds, pauses for 1.5 seconds then cycles again.	Siren once per second for 3 seconds then pause 1.5 seconds then cycle again.
<b>Test (Wireless Paired Unit)</b> <p>Alarm being tested signals others in the network. Once paired alarms have finished sounding alarm in Test, they will enter a Test Mode for 5mins, they will not sound the alarm again if another test is performed until Test mode has ended. To clear Test mode press the Test button for 1sec on alarm.</p>	Flash twice every 1 second for duration of 5 minutes.	Beep twice for 10 seconds.
<b>Local Alarm Detected Smoke</b>	Flashes once per second for 3 seconds, pauses for 1.5 seconds then cycles again.	Siren once per second for 3 seconds then pause 1.5 seconds then cycle again.
<b>Paired Wireless Alarm</b>	None	Continuous 2 beeps every 1 second.
<b>Silence Feature (Hush Mode)</b> <ul style="list-style-type: none"> <li>This smoke alarm has a built-in Silence feature.</li> <li>If cooking or other non-hazardous sources cause the alarm to sound, it can be temporarily silenced by pressing the HUSH button for above 2 seconds.</li> <li>The alarm enters silence mode for 10 minutes. After the 10 minute dormant period, the smoke alarm will resume normal operation.</li> </ul>	The Red LED flashes every 8 seconds.	None
<b>Low Battery Warning</b> <p>Need to replace for a new smoke alarm</p>	The Red LED flashes every 40 seconds.	Beep every 40 seconds.
<b>Connected Low Battery Warning</b> <p>(Connected device battery is running low)</p>	1 flash every 3 hours.	1 beep every 3 hours.
<b>Low Battery Warning Silence Feature</b> <p>(Low battery warning is muted)</p>	None	None
<b>Internal Fault Warning</b> <p>Need to replace smoke alarm</p>	None	Beep every 40 seconds.
<b>Caution:</b> <ul style="list-style-type: none"> <li>Before using the silence function, identify the source of the smoke and ensure conditions are safe. The unit will resume normal operation after 10 minute silence.</li> <li>DO not use an open flame to test your alarm, you could damage the alarm or ignite combustible materials and result in a fire.</li> <li>If the alarm sounds, and it is not being tested, it means the unit detected smoke. <b>THE SOUND OF THE ALARM REQUIRES YOUR IMMEDIATE ATTENTION AND ACTION.</b></li> </ul>		

### Installation planning

- Recommended location of smoke alarms
- Standard guidelines should be followed and locations should be planned for optimum performance when installing the smoke alarms. The Building Code of Australia and regional Government Legislations provide direction.
- For optimal performance, alarms should be mounted as close to the centre of the rooms as practical and on the ceiling for residential applications (see diagram 2).
- Smoke alarms should be located in the vicinity of sleeping areas, bedrooms and along the path to the exit as the sleeping quarters are usually further from building exits.
- Smoke alarms should be mounted near each end of hallways longer than 9 metres.
- Smoke alarms on ceiling must be installed at least 300mm away from walls or corners (see diagram 3).
- Where it is necessary to mount smoke alarms on a wall, use the inside wall of the room and position them between 300mm and 500mm from the ceiling. (See diagram 3).
- The alarm should be at least 500mm away from the apex of any angled ceiling surface and no greater than 1500mm (see diagram 3).
- Alarms should be located in every room where electrical appliances are used.

### Multi-Storey

- Alarms should be installed on every floor level.
- Stairwells can act like chimneys as smoke can rise through them, so additional alarms should be located in these areas (see diagram 1).

Diagram 1

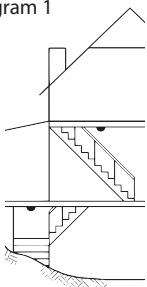


Diagram 2 - Suggest alarm location

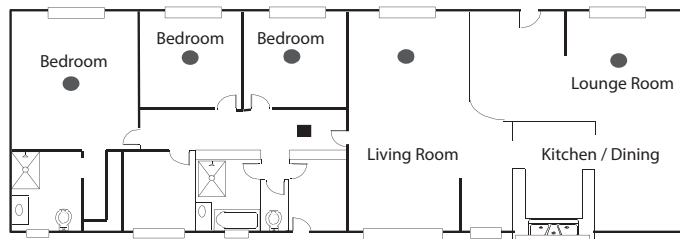
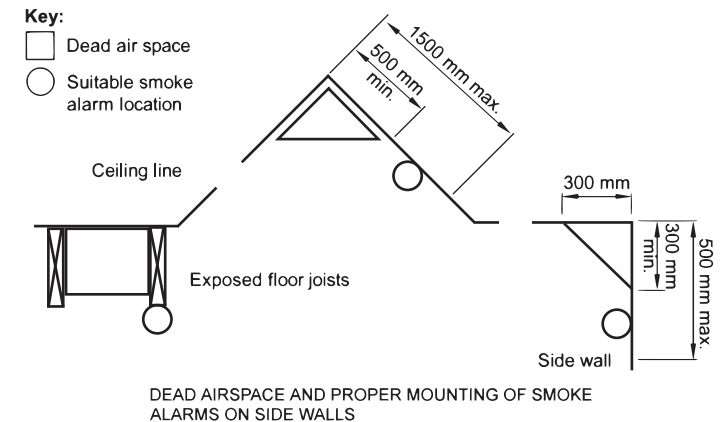


Diagram 3



### Locations to avoid:

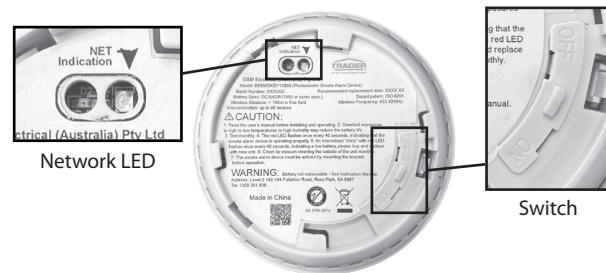
- Air-conditioner ducts or appliance outlets that create airflow such as heaters where combustion heat particles rise and spread horizontally. Avoid locating the smoke alarms within 1 metre as it can cause nuisance triggering or smoke particles may be blown away from alarm.
- Avoid installation in kitchen areas as nuisance triggering can occur from cooking fumes, heat or smoke particles rising.
- Avoid installation in damp areas or extremely humid locations where relative humidity may reach 90%.
- Avoid installing in areas where there are large temperature variations such as 5 to 45 degrees as performance may vary in extreme conditions and battery life may be reduced.
- Avoid installing alarms in areas that are considered "dead air space" where smoke will unlikely reach the alarm (see diagram 3).
- It is recommended not to locate your alarm in the garage - products of combustion that are present when you start your vehicle may cause nuisance triggering.
- Do not locate your alarm less than 500mm from the peak of an "A" frame type ceiling (see diagram 3).
- Avoid dusty areas or areas where insects may infest the unit as it may cause nuisance triggering or premature failure.
- Avoid installation in close proximity to other electrical equipment or fluorescent lights as electromagnetic interference may cause nuisance triggering.

Diagram 5

### Procedure wireless alarm installation

1. Plan out and select the appropriate locations for the alarms to be installed following building code or local requirements for installation positioning
2. If mounting more than one alarm or joining an alarm to a network the alarms should be paired before mounting, prior to mounting undertake the following procedure
3. The switch on the rear of the BESMOKEY10BW can either be turned on by hand, or the mounting bracket can be used to turn the alarm on by inserting it and turning. (If turning on by hand make sure it is switched off before mounting it back into the bracket at installation) (see Diagram 4)

Diagram 4



### Pairing the Alarm

1. Check each alarm is switched on and working by pressing and holding the test button for approximately 2 seconds, the alarm test sequence will activate and sound after a short delay.
2. Choose one smoke alarm as the master
3. Press 3 times in 2 seconds to turn alarm into Pairing or connect mode
4. The master alarm will flash a red LED followed by blue LED. Mark the master on the back and always use the same alarm in the network as the master.
5. Then using the next smoke alarm to be linked press 3 times in fast succession to place the alarm into pair mode where it searches to link to the master
6. The newly linked alarm will flash red and then follow with a green LED for approximately 3 seconds indicating it is connected to the master
7. The master exits pairing mode after 30 seconds of inactivity, so it is suggested to prepare to pair multiple alarms in sequence for pairing.
8. Repeat steps 1-5 for further pairing or step 4 to 6 if multiples done while the master is in pairing mode.
9. To confirm if the network has been created, check and confirm the status of each alarm prior to assembling to the mounting bracket. The LED indicator on the rear of the BESMOKEY10BW will show the following status: RED (not network established yet), BLUE (alarm is trying to pair to others) or GREEN (alarm is paired)
10. When the alarms are successfully paired to the master, press the test button 3 times in 2 seconds on the master to exit the mode or wait for the 30 seconds to exit pairing automatically. The BLUE LED will switch off.
11. Once the alarms are paired and the network created, take alarms to the mounting locations, mark out positions, drill 5mm holes and install ceiling plugs (diagram 5) and assemble them to the mounting brackets.
12. The BESMOKEY10BW can also be networked with the BESMOKEY10+BESMOKEY10WM as shown in diagram 6.

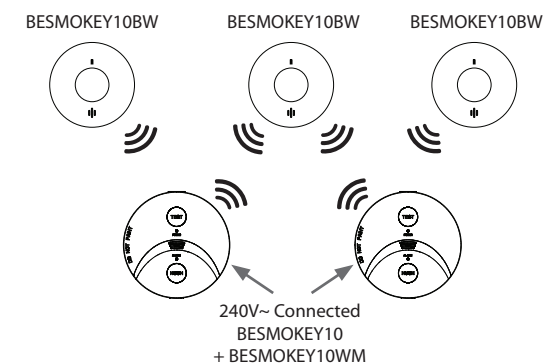


### Disconnecting an alarm from a network and returning to factory settings

1. Remove the alarm from the mounting bracket and ensure the switch on the rear is in the OFF position
2. Press and hold the test button and simultaneously turn the switch to the on position, the RED LED will illuminate for 3 seconds
3. Once the RED LED has turned off release the TEST button. The RED LED will then turn on again for 3 seconds. While the LED is illuminated press the TEST button momentarily and the alarm will un-pair from the master. The RED LED will then flash for several seconds before turning off.
4. Once the RED LED has stopped flashing the Alarm has been returned to factory settings. Please note that the alarm can be paired and un-paired indefinitely.
5. The smoke alarm can be switched off again by turning the switch on the rear to the off position.

Diagram 6

### NETWORK CONFIGURATION EXAMPLE



**Cleaning and Maintenance**

Periodically apply the Test Procedure to test the alarm. Smoke Alarms are prone to dust and insect ingress which can cause false alarms. It is prudent to clean the smoke alarm periodically. The Smoke Alarm must be kept clean so that excess dust does not build up. Any insects or cobwebs in the vicinity of the Smoke Alarm should be promptly removed. Vacuum the outside of the Smoke Alarm to remove any dust build up. Do not spray any cleaning liquids directly onto the smoke alarm.

**Low battery mode**

When the battery is running low, the smoke alarm will indicate this with a repetitive beep and flash for approximately 30 days.

WARNING: This smoke alarm is equipped with a non-replaceable battery. When this warning occurs, replace the device as soon as possible! The acoustic low battery warning signal can be muted for ten hours by pressing the test on. The smoke alarm is still functioning and able to detect smoke when it's in this mode.

**Silence feature (hush mode)**

When the smoke alarm has detected smoke and turns into the alarm mode, you can mute the alarm for approx 10±1 minutes by pressing the test button. After that, the smoke alarm automatically resets and returns into the mortal operation mode. If there are till particles of combustion in the air, the smoke alarm will turn into the alarm mode again. WARNING: Before using the alarm silence facility, always identify the cause of the alarm and make sure that the circumstances are safe.

**Periodically apply the Test Procedure to test the alarm.**

Smoke Alarms are prone to dust and insect ingress which can cause false alarm, it is important to clean the smoke alarm periodically. The Smoke Alarm must be kept clean so that excess dust does not build up. Any insects or cobwebs in the vicinity of the Smoke Alarm should be promptly removed. Vacuum the outside of the Smoke Alarm to remove any dust build up. Do not spray any cleaning liquids directly onto the smoke alarm. Replace the battery Audio and Visual Indication System

**Develop an Escape Plan**

As part of your plan, all family members should know and/or practice:

- 1. The two quickest ways out of each room
- 2. How to exit from upstairs, for homes with a second storey. A rope or chain may be required.
- 3. An agreed upon meeting place outside, such as the letterbox
- 4. The sound of the smoke alarm and practice leaving your home when they hear it.
- 5. A fire drill at least every six months including drills at nights. Practice allows you to test your plan before an emergency. You may not be able to reach your children. It is important that they know what to do!

**What to do if the Alarm sounds**

- 1. Alert any small children and elderly persons.
- 2. Leave immediately by your plan of escape. Every second counts, so don't waste time getting dressed or picking up valuables.
- 3. In leaving, don't open any inside door without first feeling its surface. If hot, or if you see smoke seeping through cracks, don't open that door! Instead, use your alternate exit. If inside door is cool, place your shoulder against it, open it slightly and be ready to slam it shut if heat and smoke rush in.
- 4. Stay close to the floor if air is smoky. Breathe shallowly through a wet cloth if possible.
- 5. Once outside, go to your selected meeting place and make sure everyone is there.
- 6. Call the Fire Brigade on 000.
- 7. Don't return to your home until officials say that it is safe to do so. For further information on fire safety contact your local Fire Brigade.

Trouble Shooting:	
Problem	Cause and Remedy
The Red LED does not flash every 40s	<ul style="list-style-type: none"><li>• Ensure the alarm is switched on and inserted on base correctly.</li></ul>
Smoke alarm does not sound when tested	<ul style="list-style-type: none"><li>• Ensure the alarm is switched on and inserted on base correctly.</li></ul>
Low battery warning	<ul style="list-style-type: none"><li>• Replace a new smoke alarm.</li></ul>
False alarm	<ul style="list-style-type: none"><li>• Press the HUSH button to silence it.</li><li>• Clean smoke alarm device.</li><li>• Move the smoke alarm device to new location.</li><li>• Dust or insect contamination - vacuum around Smoke Alarm to remove web or insects or blow with cool air dryer to clear dust to prevent false triggering.</li></ul>
If the problem still exists, please return to your electrical wholesaler. If the unit is out of warranty, please replace another new alarm.	

**Repair**

Caution: Do not attempt to repair the alarm. It will affect your warranty. If the alarm is not operating properly, and is still under warranty, return it to the original place you buy. Pack it in a well-padded carton, and ship to the original place of purchase.

**Disposal:**

Waste electrical products and batteries should not be disposed of with your other household waste. The alarm is ideally suited for disposal within the waste electronic and electrical equipment (WEEE) recycling scheme. Please recycle where facilities exist. Check with your local authority, retailer or contact our Technical Support team for recycling/disposal advice as regional variations apply.



**10 Year Manufacturer's Warranty**

This product has been manufactured to the highest quality standards. This product is warranted to the original purchaser and is not transferable.



The product is guaranteed to be free from defects in workmanship and parts for a period of 10 Years from the date of purchase. Defects that occur within this warranty period, under normal use and care will be repaired, replaced or refunded. The benefits conferred by this warranty are in addition to all other rights and remedies of the consumer under Commonwealth, State and Territory laws in relation to the goods or services to which this warranty relates and Australian Consumer Law. Risk in regard to the product to be repaired shall at all times remain with the Purchaser. The warranty is given on the condition that the product to which it applies is used for the purpose and in the manner intended by its construction and for no other purposes whatsoever. GSM Electrical (Australia) Pty Ltd shall not be responsible for damage of any kind, caused by accidents, power surges, electrical storm damage, incorrect power current, infestation (vermin or insect), incorrect installation, incorrect electricity or plumbing installation, improper use of controls or failure to use the product in accordance with the operating instructions, general misuse or abuse or from normal wear and tear. Any attempt by an unauthorised person to repair or tamper with the equipment shall render the warranty null and void.

GSM Electrical (Australia) Pty Ltd's liability under this warranty is limited to the replacement and/or repair of the defective parts within the warranty period and does not extend to installation or removal of the product. Acceptance of liability by GSM Electrical (Australia) Pty Ltd contained herein is to the exclusion of any other remedy whatsoever and howsoever arising in respect of any equipment to which it applies.